

Recombinant Human ELF3 Protein, GST-tagged

Cat. No. ELF3-3240H **Lot. No.** (See product label)

SPECIFICATION

Product Overview	Human ELF3 full-length ORF (AAH03569.1, 1 a.a. - 371 a.a.) recombinant protein with GST-tag at N-terminal.
Species	Human
Source	Wheat Germ
Description	ELF3 (E74 Like ETS Transcription Factor 3) is a Protein Coding gene. Diseases associated with ELF3 include Sarcoma, Synovial and Growth Hormone Deficiency, Isolated, Type II. GO annotations related to this gene include transcription factor activity, sequence-specific DNA binding and transcription coactivator activity. An important paralog of this gene is EHF.
Molecular Mass	67.9 kDa
AA Sequence	<p>MAATCEISNIFSNYFSAMYSSDSTLASVPPAATFGADDLVLTLSNPQMSLEGTEKA SWLGEQPQFWSKTQVLDWISYQVEKNKYDASAIDFSRCDMDGATLCNCALEELRLV FGPLGDQLHAQLRDLTSSSSDELWIIELLEKDGMAFQEALDPGPFDDQGSPFAQELL DDGQQASPYHPGSCGAGAPSPGSSDVSTAGTGASRSSHSSSDSGGSDVDLDPTDG KLFPSDGFDRDCKKGDPKHGKRKRGRPRKLSKEYWDCLEGKKS KHAPRGTHLWEFI RDILIHPELNEGLMKWENRHEGVFKFLRSEAVAQLWGQKKKNSNMTYEKLSRAMRY YYKREILERVDGRRLVYKFGKNSSGWKEEEVLQSRN</p>
Applications	Enzyme-linked Immunoabsorbent Assay Western Blot (Recombinant protein)

 Tel: 1-631-559-9269 1-516-512-3133

 Email: info@creative-biomart.com  Fax: 1-631-938-8127

 45-1 Ramsey Road, Shirley, NY 11967, USA

	Antibody Production Protein Array
Notes	Best use within three months from the date of receipt of this protein.
Storage	Store at -80 centigrade. Aliquot to avoid repeated freezing and thawing.
Storage Buffer	50 mM Tris-HCl, 10 mM reduced Glutathione, pH=8.0 in the elution buffer.
GENE INFORMATION	
Gene Name	ELF3 E74-like factor 3 (ets domain transcription factor, epithelial-specific) [Homo sapiens]
Official Symbol	ELF3
Synonyms	ELF3; E74-like factor 3 (ets domain transcription factor, epithelial-specific); ESX; ETS-related transcription factor Elf-3; EPR 1; ERT; ESE 1; epithelial-restricted with serine box; epithelium-restricted Ets protein ESX; epithelium-specific Ets transcription factor 1; E74-like factor 3 (ets domain transcription factor); ets domain transcription factor, serine box (epithelial-specific); E74-like factor 3 (ETS domain transcription factor, serine box, epithelial-specific); EPR-1; ESE-1;
Gene ID	1999
mRNA Refseq	NM_001114309
Protein Refseq	NP_001107781
MIM	602191

 Tel: 1-631-559-9269 1-516-512-3133

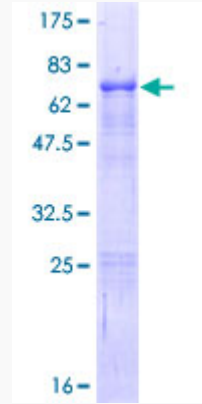
 Email: info@creative-biomart.com  Fax: 1-631-938-8127

 45-1 Ramsey Road, Shirley, NY 11967, USA

UniProt ID

P78545

Quality Control
Testing



12.5% SDS-PAGE Stained with Coomassie Blue.

 Tel: 1-631-559-9269 1-516-512-3133

 Email: info@creative-biomart.com  Fax: 1-631-938-8127

 45-1 Ramsey Road, Shirley, NY 11967, USA