

## Recombinant Human ELK4 Protein, GST-tagged

**Cat. No.** ELK4-3246H    **Lot. No.** (See product label)

### SPECIFICATION

|                         |   |
|-------------------------|---|
| <b>Product Overview</b> | Human ELK4 full-length ORF ( NP_068567.1, 1 a.a. - 405 a.a.) recombinant protein with GST-tag at N-terminal.  |
| <b>Species</b>          | Human   |
| <b>Source</b>           | Wheat Germ  |
| <b>Description</b>      | This gene is a member of the Ets family of transcription factors and of the ternary complex factor (TCF) subfamily. Proteins of the TCF subfamily form a ternary complex by binding to the the serum response factor and the serum reponse element in the promoter of the c-fos proto-oncogene. The protein encoded by this gene is phosphorylated by the kinases, MAPK1 and MAPK8. Several transcript variants have been described for this gene. [provided by RefSeq, Jul 2008] |
| <b>Molecular Mass</b>   | 71.1 kDa  |
| <b>AA Sequence</b>      | MDSAITLWQFLLQLLQKPQNKHMICWTSNDGQFKLLQAEVVARLWGIRKNKPNMNY<br>DKLSRALRYYYYVKNIIKKVNGQKFVYKFSYPEILNMDPMTVGRIEGDCESLNFSEVS<br>SSSKDVENGKDKPPQPGAKTSSRNDYIHSGLYSSFTLNSLNSSNVKLFKLIK TENP<br>AEKLAEKKSPQEPTPSVIK FVTTPSKKPPVEPVAATISIGPSISPSSEETIQALET LVSP<br>KLPSLEAPTSASNVMTAFATTPPISSIPPLQEPPRTPSPPLSSHDPDIDT DIDSVASQPM<br>ELPENLSLEPKDQDSV LLEKDKVNSSRSKPKGLELAPTLVITSSDPSPLGILSPSL<br>PTASLTPAFFSQVACSLFMVSPLLSFICPFKQIQNLYTQVCFLLLRFVLERLCVTVM                                  |
| <b>Applications</b>     | Enzyme-linked Immunoabsorbent Assay   |

 Tel: 1-631-559-9269    1-516-512-3133

 Email: [info@creative-biomart.com](mailto:info@creative-biomart.com)     Fax: 1-631-938-8127

 45-1 Ramsey Road, Shirley, NY 11967, USA

Western Blot (Recombinant protein)  
 Antibody Production  
 Protein Array

|                       |  |
|-----------------------|--|
| <b>Notes</b>          | Best use within three months from the date of receipt of this protein.   |
| <b>Storage</b>        | Store at -80 centigrade. Aliquot to avoid repeated freezing and thawing. |
| <b>Storage Buffer</b> | 50 mM Tris-HCl, 10 mM reduced Glutathione, pH=8.0 in the elution buffer. |

## GENE INFORMATION

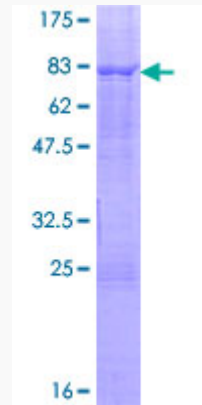
|                        |  |
|------------------------|--|
| <b>Gene Name</b>       | ELK4 ELK4, ETS-domain protein (SRF accessory protein 1) [ Homo sapiens ]   |
| <b>Official Symbol</b> | ELK4   |
| <b>Synonyms</b>        | ELK4; ELK4, ETS-domain protein (SRF accessory protein 1); ETS domain-containing protein Elk-4; SAP1; SAP-1; serum response factor accessory protein 1; DKFZp434N185; |
| <b>Gene ID</b>         | 2005   |
| <b>mRNA Refseq</b>     | NM_001973  |
| <b>Protein Refseq</b>  | NP_001964  |
| <b>MIM</b>             | 600246   |
| <b>UniProt ID</b>      | P28324   |

 Tel: 1-631-559-9269 1-516-512-3133

 Email: [info@creative-biomart.com](mailto:info@creative-biomart.com)  Fax: 1-631-938-8127

 45-1 Ramsey Road, Shirley, NY 11967, USA

**Quality Control  
Testing**



12.5% SDS-PAGE Stained with Coomassie Blue.

 Tel: 1-631-559-9269 1-516-512-3133

 Email: [info@creative-biomart.com](mailto:info@creative-biomart.com)  Fax: 1-631-938-8127

 45-1 Ramsey Road, Shirley, NY 11967, USA