

Recombinant Human ELL3 Protein, GST-tagged

Cat. No. ELL3-3250H Lot. No. (See product label)

SPECIFICATION

Product Overview	Human ELL3 full-length ORF (AAH19293, 1 a.a. - 397 a.a.) recombinant protein with GST-tag at N-terminal.
Species	Human
Source	Wheat Germ
Description	ELL3 (Elongation Factor For RNA Polymerase II 3) is a Protein Coding gene. Among its related pathways are Gene Expression and RNA polymerase II transcribes snRNA genes. GO annotations related to this gene include enhancer binding. An important paralog of this gene is ELL2.
Molecular Mass	69.41 kDa
AA Sequence	MEELQEPLRGQLRLCFTQAARTSLLLLRLNDAALRALQECQRQQVRPVIAFQGHARG YLRLPGPGWSCLFSFIVSQCCQEGAGGSLDLVCQRFLRSGPNSLHCLGSLRERLIW AAMD SIPAPSSVQGHNLTEDARHPESWQNTGGYSEGDAVSQPQMALEEVSVSDPL ASNQGQSLPGSSREHMAQWEVRSQTHVPNREPQALPSSASRKRLDKKRSVPVA TVELEEKRFRRTLPLVPSPLQGLTNQDLQEGEDWEQEDEDMGPRLHSSSVQEDSE SPSPEDIPDYLLQYRAIHSAEQQHAYEQDFETDYAEYRILHARVGTASQRFIELGAEI KRVRRGTPEYKVLLEDKIIQEYKKFRKQPSYREEKRRCEYLHQKLSHIKGLILEFEEK NRGS
Applications	Enzyme-linked Immunoabsorbent Assay Western Blot (Recombinant protein)

 Tel: 1-631-559-9269 1-516-512-3133

 Email: info@creative-biomart.com  Fax: 1-631-938-8127

 45-1 Ramsey Road, Shirley, NY 11967, USA

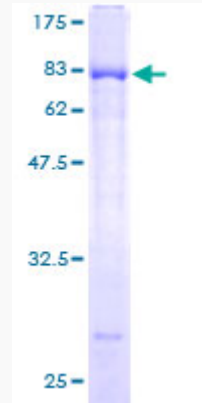
	Antibody Production Protein Array
Notes	Best use within three months from the date of receipt of this protein.
Storage	Store at -80 centigrade. Aliquot to avoid repeated freezing and thawing.
Storage Buffer	50 mM Tris-HCl, 10 mM reduced Glutathione, pH=8.0 in the elution buffer.
GENE INFORMATION	
Gene Name	ELL3 elongation factor RNA polymerase II-like 3 [Homo sapiens]
Official Symbol	ELL3
Synonyms	ELL3; elongation factor RNA polymerase II-like 3; RNA polymerase II elongation factor ELL3; FLJ22637;
Gene ID	80237
mRNA Refseq	NM_025165
Protein Refseq	NP_079441
MIM	609885
UniProt ID	Q9HB65

 Tel: 1-631-559-9269 1-516-512-3133

 Email: info@creative-biomart.com  Fax: 1-631-938-8127

 45-1 Ramsey Road, Shirley, NY 11967, USA

**Quality Control
Testing**



12.5% SDS-PAGE Stained with Coomassie Blue.

 Tel: 1-631-559-9269 1-516-512-3133

 Email: info@creative-biomart.com  Fax: 1-631-938-8127

 45-1 Ramsey Road, Shirley, NY 11967, USA