

Recombinant Human ELMO3 Protein, GST-tagged

Cat. No. ELMO3-3255H Lot. No. (See product label)

SPECIFICATION

Product Overview	Human ELMO3 full-length ORF (AAH34410.1, 1 a.a. - 607 a.a.) recombinant protein with GST-tag at N-terminal.
Species	Human
Source	Wheat Germ
Description	The protein encoded by this gene is similar to a <i>C. elegans</i> protein that functions in phagocytosis of apoptotic cells and in cell migration. Other members of this small family of engulfment and cell motility (ELMO) proteins have been shown to interact with the dedicator of cyto-kinesis 1 protein to promote phagocytosis and effect cell shape changes. [provided by RefSeq, Jul 2008]
Molecular Mass	95.3 kDa
AA Sequence	MIFAREVISRNLQILGTIIEDGDDLGEVLALS LRAFSELMHEGVVSWETLSIPFVRKV VCYVNMNLMIDASVPPLALGLLESVTLSSPALGQLVKSEVPLDRLLVHLQVMNQQLQ TKAMALLTALLQGASPVERKHMLDYLWQRNLRQFIYKNIHSAAPMGDEMAHHLVYL QALMLGELLEPRMRTPLDPYSQEQRQLQVLRQAAFEVEGESSGAGLSADRRRSLC AREFRKLGFSNSNPAQDLERVPPGLLALDNMLYFSRNAPSAYS R FVLENSSREDKH ECPFARGSIQLTVLLCELLRVGEP CSETAQDFSPMFFGQDQSFHELFCVGIQLLNKT WKEMRATQEDFDKVMQVVREQLARTLALKPTSLELFRTKVNALTYGEVLR LRQTER LHQEGLAPPILELREKLKPELMGLIRQQRLLRLCEGTLFRKISSRRRQDKLWFCCLS PNHKLLQYGDMEEGASPPTLES LPEQLPVADM RALLTGKDCPHVREKGS GKQNKD

Tel: 1-631-559-9269 1-516-512-3133

Email: info@creative-biomart.com Fax: 1-631-938-8127

45-1 Ramsey Road, Shirley, NY 11967, USA

LYELAFSISYDRGEEEEAYLNFIAPSKREFYLVWTDGLSALLGSPMGSEQTRLDLLEQLLT
METKLRLLLELENVPIPERPPPVPPTNFNFCYDCSIAEP

Applications	Enzyme-linked Immunoabsorbent Assay Western Blot (Recombinant protein) Antibody Production Protein Array
Notes	Best use within three months from the date of receipt of this protein.
Storage	Store at -80 centigrade. Aliquot to avoid repeated freezing and thawing.
Storage Buffer	50 mM Tris-HCl, 10 mM reduced Glutathione, pH=8.0 in the elution buffer.

GENE INFORMATION

Gene Name	ELMO3 engulfment and cell motility 3 [Homo sapiens]
Official Symbol	ELMO3
Synonyms	ELMO3; engulfment and cell motility 3; engulfment and cell motility 3 (ced 12 homolog, C. elegans); engulfment and cell motility protein 3; CED 12; CED12; ELMO 3; FLJ13824; ced-12 homolog 3; CED-12; ELMO-3;
Gene ID	79767
mRNA Refseq	NM_024712
Protein Refseq	NP_078988
MIM	606422

 Tel: 1-631-559-9269 1-516-512-3133

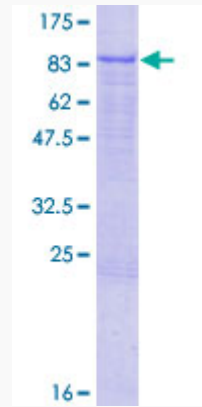
 Email: info@creative-biomart.com  Fax: 1-631-938-8127

 45-1 Ramsey Road, Shirley, NY 11967, USA

UniProt ID

Q96BJ8

Quality Control
Testing



12.5% SDS-PAGE Stained with Coomassie Blue.

 Tel: 1-631-559-9269 1-516-512-3133

 Email: info@creative-biomart.com  Fax: 1-631-938-8127

 45-1 Ramsey Road, Shirley, NY 11967, USA