

Recombinant Human ELOVL2 Protein, GST-tagged

Cat. No. ELOVL2-3261H Lot. No. (See product label)

SPECIFICATION

Product Overview	Human ELOVL2 full-length ORF (NP_060240.2, 1 a.a. - 296 a.a.) recombinant protein with GST-tag at N-terminal.
Species	Human
Source	Wheat Germ
Description	ELOVL2 (ELOVL Fatty Acid Elongase 2) is a Protein Coding gene. Among its related pathways are Fatty acid elongation and Fatty Acyl-CoA Biosynthesis. GO annotations related to this gene include transferase activity, transferring acyl groups other than amino-acyl groups and fatty acid elongase activity. An important paralog of this gene is ELOVL5.
Molecular Mass	61 kDa
AA Sequence	MEHLKAFDDEINAFLDNMFGPRDSRVRGWFMLDSYLPFFLTVMYLLSIWLGNKYM KNRPALSLRGILTLYNLGITLLSAYMLAELILSTWEGGYNLQCQDLTSAGEADIRVAKV LWWYYFSKSVFLDTIFFVLRKKTQSITFLHVYHHASMFNIWWCVLNWIPCGQSFFG PTLNSFIHILMYSYYGLSVFPSMHKYLWKKYLTQAQLVQFVLAITHTMSAVVKPCG FPFGCLIFQSSYMLTLVILFLNFYVQTYRKKPMKKDMQEPPAGKEVKNGFSKAYFTA ANGVMNKKAQ
Applications	Enzyme-linked Immunoabsorbent Assay Western Blot (Recombinant protein) Antibody Production

 Tel: 1-631-559-9269 1-516-512-3133

 Email: info@creative-biomart.com  Fax: 1-631-938-8127

 45-1 Ramsey Road, Shirley, NY 11967, USA

Protein Array

Notes	Best use within three months from the date of receipt of this protein.
Storage	Store at -80 centigrade. Aliquot to avoid repeated freezing and thawing.
Storage Buffer	50 mM Tris-HCl, 10 mM reduced Glutathione, pH=8.0 in the elution buffer.

GENE INFORMATION

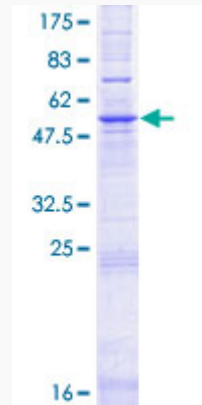
Gene Name	ELOVL2 ELOVL fatty acid elongase 2 [Homo sapiens]
Official Symbol	ELOVL2
Synonyms	ELOVL2; ELOVL fatty acid elongase 2; elongation of very long chain fatty acids (FEN1/Elo2, SUR4/Elo3, yeast) like 2; elongation of very long chain fatty acids protein 2; Ssc2; ELOVL FA elongase 2; 3-keto acyl-CoA synthase ELOVL2; elongation of very long chain fatty acids (FEN1/Elo2, SUR4/Elo3, yeast)-like 2; SSC2; FLJ20334;
Gene ID	54898
mRNA Refseq	NM_017770
Protein Refseq	NP_060240
MIM	611814
UniProt ID	Q9NXB9

 Tel: 1-631-559-9269 1-516-512-3133

 Email: info@creative-biomart.com  Fax: 1-631-938-8127

 45-1 Ramsey Road, Shirley, NY 11967, USA

**Quality Control
Testing**



12.5% SDS-PAGE Stained with Coomassie Blue.

 Tel: 1-631-559-9269 1-516-512-3133

 Email: info@creative-biomart.com  Fax: 1-631-938-8127

 45-1 Ramsey Road, Shirley, NY 11967, USA