

Recombinant Human ELOVL4 Protein, GST-tagged

Cat. No. ELOVL4-3262H Lot. No. (See product label)

SPECIFICATION

Product Overview	Human ELOVL4 partial ORF (NP_073563, 99 a.a. - 154 a.a.) recombinant protein with GST-tag at N-terminal.
Species	Human
Source	Wheat Germ
Description	This gene encodes a membrane-bound protein which is a member of the ELO family, proteins which participate in the biosynthesis of fatty acids. Consistent with the expression of the encoded protein in photoreceptor cells of the retina, mutations and small deletions in this gene are associated with Stargardt-like macular dystrophy (STGD3) and autosomal dominant Stargardt-like macular dystrophy (ADMD), also referred to as autosomal dominant atrophic macular degeneration. [provided by RefSeq, Jul 2008]
Molecular Mass	31.9 kDa
AA Sequence	MGSYNAGYSYICQSVDYSNNVHEVRIAAALWWYFVSKGVEYLDTVFFILRKKNNQV
Applications	Enzyme-linked Immunoabsorbent Assay Western Blot (Recombinant protein) Antibody Production Protein Array
Notes	Best use within three months from the date of receipt of this protein.

 Tel: 1-631-559-9269 1-516-512-3133

 Email: info@creative-biomart.com  Fax: 1-631-938-8127

 45-1 Ramsey Road, Shirley, NY 11967, USA

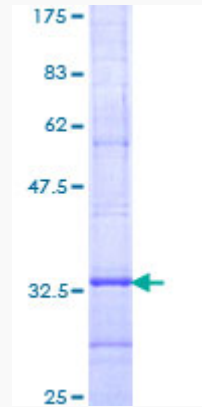
Storage	Store at -80 centigrade. Aliquot to avoid repeated freezing and thawing.
Storage Buffer	50 mM Tris-HCl, 10 mM reduced Glutathione, pH=8.0 in the elution buffer.
GENE INFORMATION	
Gene Name	ELOVL4 ELOVL fatty acid elongase 4 [Homo sapiens]
Official Symbol	ELOVL4
Synonyms	ELOVL4; ELOVL fatty acid elongase 4; elongation of very long chain fatty acids (FEN1/Elo2, SUR4/Elo3, yeast) like 4 , STGD2, STGD3; elongation of very long chain fatty acids protein 4; cancer/testis antigen 118; CT118; ELOVL FA elongase 4; 3-keto acyl-CoA synthase ELOVL4; Stargardt disease 3 (autosomal dominant); elongation of very long chain fatty acids (FEN1/Elo2, SUR4/Elo3, yeast)-like 4; ADMD; ISQMR; STGD2; STGD3; FLJ17667; FLJ92876;
Gene ID	6785
mRNA Refseq	NM_022726
Protein Refseq	NP_073563
MIM	605512
UniProt ID	Q9GZR5

 Tel: 1-631-559-9269 1-516-512-3133

 Email: info@creative-biomart.com  Fax: 1-631-938-8127

 45-1 Ramsey Road, Shirley, NY 11967, USA

**Quality Control
Testing**



12.5% SDS-PAGE Stained with Coomassie Blue.

 Tel: 1-631-559-9269 1-516-512-3133

 Email: info@creative-biomart.com  Fax: 1-631-938-8127

 45-1 Ramsey Road, Shirley, NY 11967, USA