

## Recombinant Human ELOVL5 protein, His-tagged

Cat. No. ELOVL5-7777H Lot. No. (See product label)

### SPECIFICATION

<b>Product Overview</b>	Recombinant Human ELOVL5 protein(30-104 aa), fused with N-terminal His tag, was expressed in E.coli.
<b>Species</b>	Human
<b>Source</b>	E.coli
<b>ProteinLength</b>	30-104 aa
<b>Form</b>	The purified protein was lyophilized from sterile phosphate-buffered saline (PBS: 58 mM Na <sub>2</sub> HPO <sub>4</sub> , 17 mM NaH <sub>2</sub> PO <sub>4</sub> , 68 mM NaCl, pH 7.4). Prior to lyophilization, 5% (w/v) trehalose and 5% (w/v) mannitol were incorporated as cryoprotective excipients. The protein was eluted with a buffer containing 300 mM imidazole.
<b>AASequence</b>	CTFPLGWLYFQIGYMISLIALFTNFYIQTYNKKGASRRKDHLKDHQNGSMAAVNGHT NSFSPLENNVKPRKLRKD
<b>Purity</b>	85%, by SDS-PAGE with Coomassie Brilliant Blue staining.
<b>Storage</b>	Store at 2-8°C for 1-2 weeks. Aliquot and store at -20°C to -80°C for up to 3 months, reconstitution with sterile water and addition of an equal volume of glycerol. Avoid repeat freeze-thaw cycles.
<b>Reconstitution</b>	Dissolve the product in 200 µl sterile water to achieve a working concentration of 0.25 g/

 Tel: 1-631-559-9269 1-516-512-3133

 Email: [info@creative-biomart.com](mailto:info@creative-biomart.com)  Fax: 1-631-938-8127

 45-1 Ramsey Road, Shirley, NY 11967, USA

μl. If experimental compatibility allows, mix the aqueous solution with an equal volume of glycerol (1:1 ratio) after initial reconstitution.

## GENE INFORMATION

**Gene Name** [ELOVL5 ELOVL fatty acid elongase 5 \[ Homo sapiens \]](#)

**Official Symbol** [ELOVL5](#)

**Synonyms**

ELOVL5; ELOVL fatty acid elongase 5; ELOVL family member 5, elongation of long chain fatty acids (FEN1/Elo2, SUR4/Elo3 like, yeast); elongation of very long chain fatty acids protein 5; dJ483K16.1; HELO1; ELOVL FA elongase 5; fatty acid elongase 1; 3-keto acyl-CoA synthase ELOVL5; homolog of yeast long chain polyunsaturated fatty acid elongatio; homolog of yeast long chain polyunsaturated fatty acid elongation enzyme 2; ELOVL family member 5, elongation of long chain fatty acids (FEN1/Elo2, SUR4/Elo3-like, yeast); RP3-483K16.1;

**Gene ID** [60481](#)

**mRNA Refseq** [NM\\_001242828](#)

**Protein Refseq** [NP\\_001229757](#)

**MIM** [611805](#)

**UniProt ID** [Q9NYP7](#)

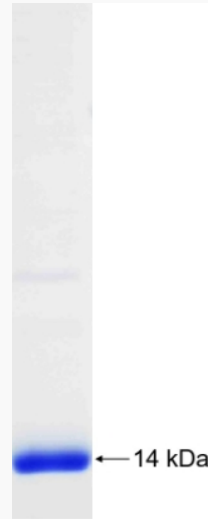
 Tel: 1-631-559-9269 1-516-512-3133

 Email: [info@creative-biomart.com](mailto:info@creative-biomart.com)  Fax: 1-631-938-8127

 45-1 Ramsey Road, Shirley, NY 11967, USA



SDS-PAGE



Tel: 1-631-559-9269 1-516-512-3133

Email: [info@creative-biomart.com](mailto:info@creative-biomart.com) Fax: 1-631-938-8127

45-1 Ramsey Road, Shirley, NY 11967, USA