

Recombinant Human ELOVL5 protein, GST-tagged

Cat. No. ELOVL5-7778H Lot. No. (See product label)

SPECIFICATION

Product Overview	Recombinant Human ELOVL5 protein(30-104 aa), fused with N-terminal GST tag, was expressed in E.coli.
Species	Human
Source	E.coli
ProteinLength	30-104 aa
Form	The purified protein was lyophilized from sterile phosphate-buffered saline (PBS: 58 mM Na ₂ HPO ₄ , 17 mM NaH ₂ PO ₄ , 68 mM NaCl, pH 8.0). Prior to lyophilization, 5% (w/v) trehalose and 5% (w/v) mannitol were incorporated as cryoprotective excipients. The protein was eluted with a buffer containing 100 mM reduced glutathione (GSH).
AASequence	CTFPLGWLYFQIGYMISLIALFTNFYIQTYNKKGASRRKDHLKDHQNGSMAAVNGHT NSFSPLENNVKPRKLRKD
Purity	85%, by SDS-PAGE with Coomassie Brilliant Blue staining.
Storage	Store at 2-8°C for 1-2 weeks. Aliquot and store at -20°C to -80°C for up to 3 months, reconstitution with sterile water and addition of an equal volume of glycerol. Avoid repeat freeze-thaw cycles.
Reconstitution	Dissolve the product in 200

 Tel: 1-631-559-9269 1-516-512-3133

 Email: info@creative-biomart.com  Fax: 1-631-938-8127

 45-1 Ramsey Road, Shirley, NY 11967, USA

µl sterile water to achieve a working concentration of 0.25 g/µl. If experimental compatibility allows, mix the aqueous solution with an equal volume of glycerol (1:1 ratio) after initial reconstitution.

GENE INFORMATION

Gene Name [ELOVL5 ELOVL fatty acid elongase 5 \[Homo sapiens \]](#)

Official Symbol [ELOVL5](#)

Synonyms

ELOVL5; ELOVL fatty acid elongase 5; ELOVL family member 5, elongation of long chain fatty acids (FEN1/Elo2, SUR4/Elo3 like, yeast); elongation of very long chain fatty acids protein 5; dJ483K16.1; HELO1; ELOVL FA elongase 5; fatty acid elongase 1; 3-keto acyl-CoA synthase ELOVL5; homolog of yeast long chain polyunsaturated fatty acid elongatio; homolog of yeast long chain polyunsaturated fatty acid elongation enzyme 2; ELOVL family member 5, elongation of long chain fatty acids (FEN1/Elo2, SUR4/Elo3-like, yeast); RP3-483K16.1;

Gene ID [60481](#)

mRNA Refseq [NM_001242828](#)

Protein Refseq [NP_001229757](#)

MIM [611805](#)

UniProt ID [Q9NYP7](#)

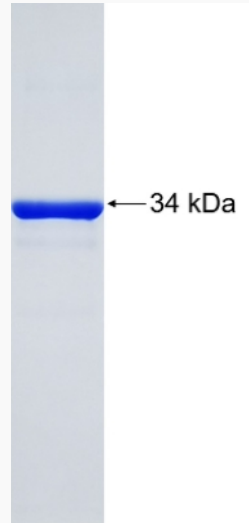
 Tel: 1-631-559-9269 1-516-512-3133

 Email: info@creative-biomart.com  Fax: 1-631-938-8127

 45-1 Ramsey Road, Shirley, NY 11967, USA



SDS-PAGE



☎ Tel: 1-631-559-9269 1-516-512-3133

☎ Email: info@creative-biomart.com ☎ Fax: 1-631-938-8127

☎ 45-1 Ramsey Road, Shirley, NY 11967, USA