

# Recombinant Human ELP6 Protein, Myc/DDK-tagged, C13 and N15-labeled

**Cat. No.** ELP6-6008H    **Lot. No.** (See product label)

## SPECIFICATION

<b>Product Overview</b>	C3orf75 MS Standard C13 and N15-labeled recombinant protein (NP_001026873) with a C-terminal MYC/DDK tag, was expressed in HEK293 cells.
<b>Species</b>	Human
<b>Source</b>	HEK293
<b>Description</b>	Acts as subunit of the RNA polymerase II elongator complex, which is a histone acetyltransferase component of the RNA polymerase II (Pol II) holoenzyme and is involved in transcriptional elongation. Elongator may play a role in chromatin remodeling and is involved in acetylation of histones H3 and probably H4. Involved in cell migration.
<b>Molecular Mass</b>	30.1 kDa
<b>AA Sequence</b>	MFVELNLLNLTTPDRAEQGKLTLLCDAKTDGSFLVHHFLSFYLNCKVCFVALIQSF SHYSIVGQKLGVSLTMARERGQLVFLEGLKSAVDVVFQAQKEPHPLQFLREANAGN LKPLFEFVREALKPVDSGEARWTYPVLLVDDLSVLLSLGMGAVAVLDFIHYCRATVC WELKGNMVLVHDSGDAEDEENDILLNGLSHQSHLILRAEGLATGFCRDVHGQLRIL WRRPSQPAVHRDQSFTYQYKIQDKSVSFFCQRNVSCCSVTTRTRPLEQKLISEEDL AANDILDYKDDDDKV
<b>Purity</b>	> 80% as determined by SDS-PAGE and Coomassie blue staining

 Tel: 1-631-559-9269    1-516-512-3133

 Email: [info@creative-biomart.com](mailto:info@creative-biomart.com)     Fax: 1-631-938-8127

 45-1 Ramsey Road, Shirley, NY 11967, USA

<b>Stability</b>	Stable for 3 months from receipt of products under proper storage and handling conditions.
<b>Storage</b>	Store at -80 centigrade. Avoid repeated freeze-thaw cycles.
<b>Concentration</b>	50 µg/mL as determined by BCA
<b>Storage Buffer</b>	100 mM glycine, 25 mM Tris-HCl, pH 7.3.

## GENE INFORMATION

<b>Gene Name</b>	ELP6 elongator acetyltransferase complex subunit 6 [ Homo sapiens (human) ]
<b>Official Symbol</b>	ELP6
<b>Synonyms</b>	ELP6; elongator acetyltransferase complex subunit 6; C3orf75; TMEM103; elongator complex protein 6; UPF0405 protein C3orf75; angiotonin-transactivated protein 1; elongator complex protein 6 homolog; transmembrane protein 103
<b>Gene ID</b>	54859
<b>mRNA Refseq</b>	NM_001031703
<b>Protein Refseq</b>	NP_001026873
<b>MIM</b>	615020
<b>UniProt ID</b>	Q0PNE2

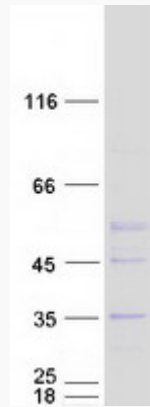
 Tel: 1-631-559-9269 1-516-512-3133

 Email: [info@creative-biomart.com](mailto:info@creative-biomart.com)  Fax: 1-631-938-8127

 45-1 Ramsey Road, Shirley, NY 11967, USA



**SDS-PAGE**



Tel: 1-631-559-9269 1-516-512-3133

Email: [info@creative-biomart.com](mailto:info@creative-biomart.com) Fax: 1-631-938-8127

45-1 Ramsey Road, Shirley, NY 11967, USA