

Recombinant Human EMC10 Protein, Myc/DDK-tagged, C13 and N15-labeled

Cat. No. EMC10-4747H Lot. No. (See product label)

SPECIFICATION

Product Overview

C19orf63 MS Standard C13 and N15-labeled recombinant protein (NP_778233) with a C-terminal MYC/DDK tag, was expressed in HEK293 cells.

Species

Human

Source

HEK293

Description

EMC10 (ER Membrane Protein Complex Subunit 10) is a Protein Coding gene. Diseases associated with EMC10 include Myocardial Infarction.

Molecular Mass

26.6 kDa

AA Sequence

MAAASAGATRLLLLLLMAVAAPSRARGSGCRAGTGARGAGAEGREGEACGTVGLL
LEHSFEIDDSANFRKRGSLLWNQQDGTLSLSQRQLSEEERGLRDVAALNGLYRVR
IPRRPGALDGLEAGGYVSSFVPACSLVESHLSDQLTLHVDVAGNVVGVSVVTHPGG
CRGHEVEDVDLELFNTSVQLQPPTTAPGPETAAFIERLEMEQAQKAKNPQEQKSSF
AKYWHIILGGAVLLTALRPAAPGPAPPPQEATRTRPLEQKLISEEDLAANDILDYKDD
DDKV

Purity

> 80% as determined by SDS-PAGE and Coomassie blue staining

Stability

Stable for 3 months from receipt of products under proper storage and handling conditions.

 Tel: 1-631-559-9269 1-516-512-3133

 Email: info@creative-biomart.com  Fax: 1-631-938-8127

 45-1 Ramsey Road, Shirley, NY 11967, USA

Storage	Store at -80 centigrade. Avoid repeated freeze-thaw cycles.
Concentration	50 µg/mL as determined by BCA
Storage Buffer	100 mM glycine, 25 mM Tris-HCl, pH 7.3.
GENE INFORMATION	
Gene Name	EMC10 ER membrane protein complex subunit 10 [Homo sapiens (human)]
Official Symbol	EMC10
Synonyms	EMC10; ER membrane protein complex subunit 10; HSM1; HSS1; C19orf63; ER membrane protein complex subunit 10; UPF0510 protein INM02; hematopoietic signal peptide-containing membrane domain-containing 1; hematopoietic signal peptide-containing secreted 1
Gene ID	284361
mRNA Refseq	NM_175063
Protein Refseq	NP_778233
MIM	614545
UniProt ID	Q5UCC4

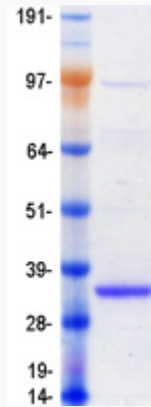
 Tel: 1-631-559-9269 1-516-512-3133

 Email: info@creative-biomart.com  Fax: 1-631-938-8127

 45-1 Ramsey Road, Shirley, NY 11967, USA



SDS-PAGE



Tel: 1-631-559-9269 1-516-512-3133

Email: info@creative-biomart.com Fax: 1-631-938-8127

45-1 Ramsey Road, Shirley, NY 11967, USA