

# Recombinant Human EMC2 Protein, Myc/DDK-tagged, C13 and N15-labeled

**Cat. No.** EMC2-6194H    **Lot. No.** (See product label)

## SPECIFICATION

<b>Product Overview</b>	TTC35 MS Standard C13 and N15-labeled recombinant protein (NP_055488) with a C-terminal MYC/DDK tag, was expressed in HEK293 cells.
<b>Species</b>	Human
<b>Source</b>	HEK293
<b>Description</b>	EMC2 (ER Membrane Protein Complex Subunit 2) is a Protein Coding gene.
<b>Molecular Mass</b>	34.8 kDa
<b>AA Sequence</b>	MAKVSELYDVTWEEMRDKMRKWREENSRNSEQIVEVGEELINEYASKLGDDIWIIE QVMIAALDYGRDDLALFCLQELRRQFPGSHRVKRLTGMRFEAMERYDDAIQLYDRIL QEDPTNTAARKRKIAIRKAQGKNVEAIRELNEYLEQFVGQDEAWHELAELYINEHDY AKAAFCLEELMMTNPHNHLYCQQYAEVKYTQGLENLELSRKYFAQALKLNNRNM RALFGLYMSASHIASNPKASAKTKKDNMKYASWAASQINRAYQFAGRSKKETKYSL KAVEDMLETLQITQSTRTRPLEQKLISEEDLAANDILDYKDDDDKV
<b>Purity</b>	> 80% as determined by SDS-PAGE and Coomassie blue staining
<b>Stability</b>	Stable for 3 months from receipt of products under proper storage and handling conditions.
<b>Storage</b>	Store at -80 centigrade. Avoid repeated freeze-thaw cycles.

 Tel: 1-631-559-9269    1-516-512-3133

 Email: [info@creative-biomart.com](mailto:info@creative-biomart.com)     Fax: 1-631-938-8127

 45-1 Ramsey Road, Shirley, NY 11967, USA

**Concentration** 50 µg/mL as determined by BCA

**Storage Buffer** 100 mM glycine, 25 mM Tris-HCl, pH 7.3.

## GENE INFORMATION

**Gene Name** EMC2 ER membrane protein complex subunit 2 [ Homo sapiens (human) ]

**Official Symbol** EMC2

**Synonyms** EMC2; ER membrane protein complex subunit 2; TTC35; KIAA0103; ER membrane protein complex subunit 2; TPR repeat protein 35; tetratricopeptide repeat domain 35; tetratricopeptide repeat protein 35

**Gene ID** 9694

**mRNA Refseq** NM\_014673

**Protein Refseq** NP\_055488

**MIM** 607722

**UniProt ID** Q15006

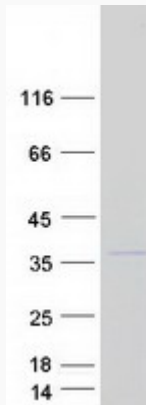
 Tel: 1-631-559-9269 1-516-512-3133

 Email: [info@creative-biomart.com](mailto:info@creative-biomart.com)  Fax: 1-631-938-8127

 45-1 Ramsey Road, Shirley, NY 11967, USA



SDS-PAGE



Tel: 1-631-559-9269 1-516-512-3133

Email: [info@creative-biomart.com](mailto:info@creative-biomart.com) Fax: 1-631-938-8127

45-1 Ramsey Road, Shirley, NY 11967, USA