

Recombinant Human EMD Protein, Myc/DDK-tagged, C13 and N15-labeled

Cat. No. EMD-1537H **Lot. No.** (See product label)

SPECIFICATION

Product Overview	EMD MS Standard C13 and N15-labeled recombinant protein (NP_000108) with a C-terminal MYC/DDK tag, was expressed in HEK293 cells.
Species	Human
Source	HEK293
Description	Emerin is a serine-rich nuclear membrane protein and a member of the nuclear lamina-associated protein family. It mediates membrane anchorage to the cytoskeleton. Dreifuss-Emery muscular dystrophy is an X-linked inherited degenerative myopathy resulting from mutation in the emerin gene.
Molecular Mass	29 kDa
AA Sequence	MDNYADLSDTELTLLRRYNIPHGPVVGSTRRLYEKKIFEYETQRRRLSPSSSAAS SYSFSDLNSTRGDADMYDLPKKEDALLYQSKGYNDYYEESYFTTRTYGEPESAGP SRAVRQSVTSFPDADAFHHQVHDDLLSSSEEECKDRERPMYGRDSAYQSITHYR PVSASRSSLDSYYPTSSSTFSMSSSSSSSWLTRRAIRPENRAPGAGLGQDRQVP LWGQLLLFLVFVIVLFFIYHFMQAEEGNPFTRTRPLEQKLISEEDLAANDILDYKDDDD KV
Purity	> 80% as determined by SDS-PAGE and Coomassie blue staining
Stability	Stable for 3 months from receipt of products under proper storage and handling

 Tel: 1-631-559-9269 1-516-512-3133

 Email: info@creative-biomart.com  Fax: 1-631-938-8127

 45-1 Ramsey Road, Shirley, NY 11967, USA

conditions.

Storage Store at -80 centigrade. Avoid repeated freeze-thaw cycles.

Concentration 50 µg/mL as determined by BCA

Storage Buffer 100 mM glycine, 25 mM Tris-HCl, pH 7.3.

GENE INFORMATION

Gene Name EMD emerin [Homo sapiens (human)]

Official Symbol EMD

Synonyms EMD; emerin; Emery Dreifuss muscular dystrophy; LEM domain containing 5; LEMD5; STA; EDMD;

Gene ID 2010

mRNA Refseq NM_000117

Protein Refseq NP_000108

MIM 300384

UniProt ID P50402

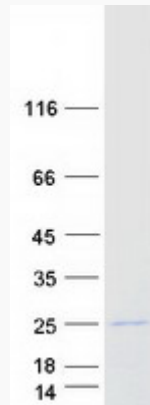
 Tel: 1-631-559-9269 1-516-512-3133

 Email: info@creative-biomart.com  Fax: 1-631-938-8127

 45-1 Ramsey Road, Shirley, NY 11967, USA



SDS-PAGE



Tel: 1-631-559-9269 1-516-512-3133

Email: info@creative-biomart.com Fax: 1-631-938-8127

45-1 Ramsey Road, Shirley, NY 11967, USA