

## Recombinant Human EMD Protein, GST-tagged

Cat. No. EMD-3273H Lot. No. (See product label)

### SPECIFICATION

<b>Product Overview</b>	Human EMD full-length ORF ( NP_000108.1, 1 a.a. - 254 a.a.) recombinant protein with GST-tag at N-terminal.
<b>Species</b>	Human
<b>Source</b>	Wheat Germ
<b>Description</b>	Emerin is a serine-rich nuclear membrane protein and a member of the nuclear lamina-associated protein family. It mediates membrane anchorage to the cytoskeleton. Dreifuss-Emery muscular dystrophy is an X-linked inherited degenerative myopathy resulting from mutation in the emerin gene. [provided by RefSeq, Jul 2008]
<b>Molecular Mass</b>	55.4 kDa
<b>AA Sequence</b>	MDNYADLSDTELTLLRRYNIPHGPVVGSTRRLYEKKIFEYETQRRRLSPPSSSAAS SYSFSDLNSTRGDADMYDLPKKEDALLYQSKGYNDYYEESYFTTRTYGEPESAGP SRAVRQSVTSFPDADAFHHQVHDDLLSSSEEECKDRERPMYGRDSAYQSITHYR PVSASRSSLDSYYPTSSSTFSMSSSSSSSWLTRRAIRPENRAPGAGLGQDRQVP LWGQLLLFLVFVIVLFFIYHFMQAEEGNPF
<b>Applications</b>	Enzyme-linked Immunoabsorbent Assay Western Blot (Recombinant protein) Antibody Production Protein Array

 Tel: 1-631-559-9269 1-516-512-3133

 Email: [info@creative-biomart.com](mailto:info@creative-biomart.com)  Fax: 1-631-938-8127

 45-1 Ramsey Road, Shirley, NY 11967, USA

<b>Notes</b>	Best use within three months from the date of receipt of this protein.
<b>Storage</b>	Store at -80 centigrade. Aliquot to avoid repeated freezing and thawing.
<b>Storage Buffer</b>	50 mM Tris-HCl, 10 mM reduced Glutathione, pH=8.0 in the elution buffer.

## GENE INFORMATION

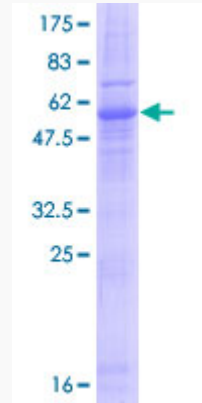
<b>Gene Name</b>	EMD emerin [ Homo sapiens ]
<b>Official Symbol</b>	EMD
<b>Synonyms</b>	EMD; emerin; Emery Dreifuss muscular dystrophy; LEM domain containing 5; LEMD5; STA; EDMD;
<b>Gene ID</b>	2010
<b>mRNA Refseq</b>	NM_000117
<b>Protein Refseq</b>	NP_000108
<b>MIM</b>	300384
<b>UniProt ID</b>	P50402

 Tel: 1-631-559-9269 1-516-512-3133

 Email: [info@creative-biomart.com](mailto:info@creative-biomart.com)  Fax: 1-631-938-8127

 45-1 Ramsey Road, Shirley, NY 11967, USA

**Quality Control  
Testing**



12.5% SDS-PAGE Stained with Coomassie Blue.

 Tel: 1-631-559-9269 1-516-512-3133

 Email: [info@creative-biomart.com](mailto:info@creative-biomart.com)  Fax: 1-631-938-8127

 45-1 Ramsey Road, Shirley, NY 11967, USA