

# Recombinant Full Length Human EMILIN2 Protein, C-Flag-tagged

**Cat. No.** EMILIN2-1287HFL    **Lot. No.** (See product label)

## SPECIFICATION

<b>Product Overview</b>	Recombinant Full Length Human EMILIN2 Protein, fused to Flag-tag at C-terminus, was expressed in Mammalian cells.
<b>Species</b>	Human
<b>Source</b>	Mammalian Cells
<b>Description</b>	Predicted to enable extracellular matrix constituent conferring elasticity. Predicted to be involved in cell adhesion. Located in extracellular region.
<b>Form</b>	25 mM Tris HCl, pH 7.3, 100 mM glycine, 10% glycerol.
<b>Molecular Mass</b>	115.5 kDa
<b>AA Sequence</b>	<p>MWQPRRPWPRVPWRWALALLALVGAGLCHAGPQPGYPARPSARNKNWCAYIVNK            NVSCSVLEGSESEFIQA QYNCAWNQMPCPSALVYRVNFRPRYVTRYKTVTQLEWRC            CPGFRGGDCQEGPKDPVKTLRPTPARPRNSL KKATDNEPSQFSEPRKTLSPGTGA            QPSWGVDPKQELQEKKIQVLEEKVLRRLTRTVLDLQSSLAGVSE NLKHATQDDA            SRTRAPGLSSQHPKPDTTVSGDTETGQSPGVFNTKESGMKDIKSELAEVKDTLKNK            SDKL EELDGKVKGYEGQLRQLQEEAAQGPTVTMTTNELYQAYVDSKIDALREELME            GMDRKLADLKNSCEYKLTG LQQQCDDYGSSYLGVIELIGEKETSRLRKEINNLRARLQ            EPSAQANCCDSEKNGDIGQIKTLQKIERRVA EATRMLNGRLDNEFDRLIVPEPDVD            FDAKWNELDARINVTEKNAEEHCFYIEETLRGAINGEVGDLLKQLV DQKIQSLEDRLG            SVLLQMTNNTGAELSPGAAALPGVSGSGDERVMMELNHLKDKVQVVEDICLLNIQ</p>

 Tel: 1-631-559-9269    1-516-512-3133

 Email: [info@creative-biomart.com](mailto:info@creative-biomart.com)     Fax: 1-631-938-8127

 45-1 Ramsey Road, Shirley, NY 11967, USA

GK PHGMEGALPNREDRAVRDSLHLLKSLNDTMHRKFQETEQTIQKLQQDFSFLYS  
 QLNHTENDVTHLQKEMS NCRAGENAGMGRFTKVGEQERTVDTLPSPQHPVAHCC  
 SQLEERWQRLQSQVISELDACKECTQGVQREVS MVEGRVSHMEKTCSKLDISIGN  
 LQRIKEGLNKHVSSLWNCVVRQMNGTLRSHSRDISGLKNSVQQFYSHVF QISTDLQD  
 LVKFQPSAKAPSPPPPAEAPKEPLQPEPAPPRPSGPATAEDPGRRPVLPQRPPPEER  
 PPQPPG STGVIAETGQAGPPAGAGVSGRGLPRGVDGQTGSGTVPGAEGFAGAPG  
 YPKSPPVASPGAPVPSLVSFSA GLTQKPFPSDGGVVLFNKVLVNDGDVYNPSTGVF  
 TAPYDGRYLITATLTPERDAYVEAVLSVSNASVAQL HTAGYRREFLEYHRPPGALHT  
 CGGPGAFHLIVHLKAGDAVNVVVTGGKLAHTDFDEMYSTFSGVFLYPFL  
 SHLTRTRPLEQKLISEEDLAANDILDYKDDDDKV

**Purity** > 80% as determined by SDS-PAGE and Coomassie blue staining.

**Stability** Stable for 12 months from the date of receipt of the product under proper storage and handling conditions. Avoid repeated freeze-thaw cycles.

**Storage** Store at -80 centigrade.

**Concentration** >50 ug/mL as determined by microplate BCA method.

**Preparation** Recombinant protein was captured through anti-DDK affinity column followed by conventional chromatography steps.

**Full Length** Full L.

## GENE INFORMATION

**Gene Name** [EMILIN2 elastin microfibril interfacier 2 \[ Homo sapiens \(human\) \]](#)

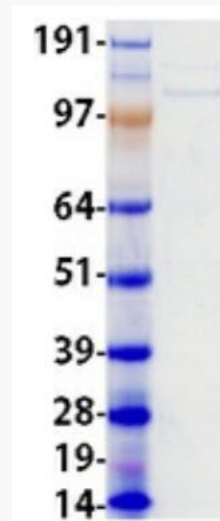
**Official Symbol** [EMILIN2](#)

 Tel: 1-631-559-9269 1-516-512-3133

 Email: [info@creative-biomart.com](mailto:info@creative-biomart.com)  Fax: 1-631-938-8127

 45-1 Ramsey Road, Shirley, NY 11967, USA

<b>Synonyms</b>	FOAP-10; EMILIN-2
<b>Gene ID</b>	84034
<b>mRNA Refseq</b>	NM_032048.3
<b>Protein Refseq</b>	NP_114437.2
<b>MIM</b>	608928
<b>UniProt ID</b>	Q9BXX0



Coomassie blue staining of purified EMILIN2 protein.

 Tel: 1-631-559-9269 1-516-512-3133

 Email: [info@creative-biomart.com](mailto:info@creative-biomart.com)  Fax: 1-631-938-8127

 45-1 Ramsey Road, Shirley, NY 11967, USA