

Recombinant Human EMILIN2 Protein, GST-tagged

Cat. No. EMILIN2-3280H **Lot. No.** (See product label)

SPECIFICATION

Product Overview	Human EMILIN2 partial ORF (NP_114437.2, 121 a.a. - 230 a.a.) recombinant protein with GST-tag at N-terminal.
Species	Human
Source	Wheat Germ
Description	EMILIN2 (Elastin Microfibril Interfacer 2) is a Protein Coding gene. Diseases associated with EMILIN2 include Porokeratosis Of Mibelli and Porokeratosis. GO annotations related to this gene include extracellular matrix constituent conferring elasticity. An important paralog of this gene is EMILIN1.
Molecular Mass	37.84 kDa
AA Sequence	GPKDPVKTLRPTPARPRNSLKKATDNEPSQFSEPRKTLSPGTGAQPSWGVDPKEG PQELQEKKIQVLEEKVLRRLTRTVLDLQSSLAGVSENLKHATQDDASRTRAPGLSS
Applications	Enzyme-linked Immunoabsorbent Assay Western Blot (Recombinant protein) Antibody Production Protein Array
Notes	Best use within three months from the date of receipt of this protein.
Storage	Store at -80 centigrade. Aliquot to avoid repeated freezing and thawing.

 Tel: 1-631-559-9269 1-516-512-3133

 Email: info@creative-biomart.com  Fax: 1-631-938-8127

 45-1 Ramsey Road, Shirley, NY 11967, USA

Storage Buffer 50 mM Tris-HCl, 10 mM reduced Glutathione, pH=8.0 in the elution buffer.

GENE INFORMATION

Gene Name EMILIN2 elastin microfibril interfacier 2 [Homo sapiens]

Official Symbol EMILIN2

Synonyms EMILIN2; elastin microfibril interfacier 2; EMILIN-2; FLJ33200; FOAP 10; extracellular glycoprotein EMILIN-2; elastin microfibril interface-located protein 2; FOAP-10;

Gene ID 84034

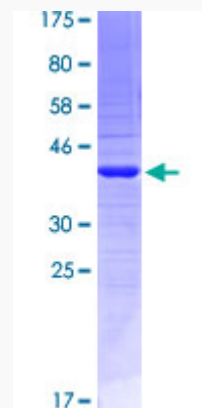
mRNA Refseq NM_032048

Protein Refseq NP_114437

MIM 608928

UniProt ID Q9BXX0

Quality Control Testing



 Tel: 1-631-559-9269 1-516-512-3133

 Email: info@creative-biomart.com  Fax: 1-631-938-8127

 45-1 Ramsey Road, Shirley, NY 11967, USA



12.5% SDS-PAGE Stained with Coomassie Blue.

 Tel: 1-631-559-9269 1-516-512-3133

 Email: info@creative-biomart.com  Fax: 1-631-938-8127

 45-1 Ramsey Road, Shirley, NY 11967, USA