

Recombinant Human EMILIN2 Protein, Myc/DDK-tagged, C13 and N15-labeled

Cat. No. EMILIN2-4480H Lot. No. (See product label)

SPECIFICATION

Product Overview

EMILIN2 MS Standard C13 and N15-labeled recombinant protein (NP_114437) with a C-terminal MYC/DDK tag, was expressed in HEK293 cells.

Species

Human

Source

HEK293

Description

May be responsible for anchoring smooth muscle cells to elastic fibers, and may be involved not only in the formation of the elastic fiber, but also in the processes that regulate vessel assembly. Has cell adhesive capacity.

Molecular Mass

115.5 kDa

AA Sequence

MWQPRRPWPRVPWRWALALLALVGAGLCHAGPQPYPARPSARNKNWCAYIVNK
 NVSCSVLEGSESFIAQYNCAWNQMPCPSALVYRVNFRPRYVTRYKTVTQLEWRC
 CPGFRGGDCQEGPKDPVKTLRPTPARPRNSLKKATDNEPSQFSEPRKTLSPGTGA
 QPSWGVDPKKEGPQELQEKKIQVLEEKVLRRLTRTVLDLQSSLAGVSENKHHATQDDA
 SRTRAPGLSSQHPKPDTTVSGDTETGQSPGVFNTKESGMKDIKSELAEVKDTLKNK
 SDKLEELDGGKVKGYEGQLRQLQEAAQGPTVTMTNELYQAYVDSKIDALREELMEG
 MDRKLADLKNSEYKLTGLQQCCDDYGSSYLGVIELIGEKETSLRKEINNLRARLQE
 PSAQANCCDSEKNGDIGQIKTLDQKIERVAEATRMLNGLDNEFDRLIVPEPDVDF
 DAKWNELDARINVTEKNAEEHCFYIEETLRGAINGEVGDQLQVLDQKIQSLEDRLGS
 VLLQMTNNTGAELSPPGAAALPGVSGSGDERVMMELNHLKDKVQVVEDICLLNIQG

 Tel: 1-631-559-9269 1-516-512-3133

 Email: info@creative-biomart.com  Fax: 1-631-938-8127

 45-1 Ramsey Road, Shirley, NY 11967, USA

KPHGMEGALPNREDRAVRDSLHLLKSLNDTMHRKFQETEQTIQKLQQDFSFYLSQL
 NHTENDVTHLQKEMSNCRAGENAGMGRFTKVGEQERTVDTLPSPQHPVAHCCSQ
 LEERWQRLQSQVISELDACKECTQGVQREVSMVEGRVSHMEKTCSKLDISISGNLQ
 RIKEGLNKHVSSLWNCVRQMNGTLRSHSRDISGLKNSVQQFYSHVFQISTDLQDLV
 KFQPSAKAPSPPPPAEAPKEPLQPEPAPPRPSGPATAEDPGRRPVLPQRPEERPP
 QPPGSTGVIAETGQAGPPAGAGVSGRGLPRGVDGQTGSGTVPGAEGFAGAPGYP
 KSPPVASPGAPVPSLVSFSAGLTQKPFPSDGGVVLFNKVLVNDGDVYNPSTGVFTA
 PYDGRYLITATLTPERDAYVEAVLSVSNASVAQLHTAGYRREFLEYHRPPGALHTCG
 GPGAFHLIVHLKAGDAVNVVVVTGGKLAHTDFDEMYSTFSGVFLYPFLSHLTRTRPLE
 QKLISEEDLAANDILDYKDDDDKV

Purity > 80% as determined by SDS-PAGE and Coomassie blue staining

Stability Stable for 3 months from receipt of products under proper storage and handling conditions.

Storage Store at -80 centigrade. Avoid repeated freeze-thaw cycles.

Concentration 50 µg/mL as determined by BCA

Storage Buffer 100 mM glycine, 25 mM Tris-HCl, pH 7.3.

GENE INFORMATION

Gene Name EMILIN2 elastin microfibril interfacier 2 [Homo sapiens (human)]

Official Symbol EMILIN2

Synonyms EMILIN2; elastin microfibril interfacier 2; EMILIN-2; FLJ33200; FOAP 10; extracellular glycoprotein EMILIN-2; elastin microfibril interface-located protein 2; FOAP-10;

 Tel: 1-631-559-9269 1-516-512-3133

 Email: info@creative-biomart.com  Fax: 1-631-938-8127

 45-1 Ramsey Road, Shirley, NY 11967, USA

Gene ID 84034

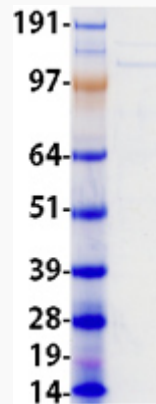
mRNA Refseq NM_032048

Protein Refseq NP_114437

MIM 608928

UniProt ID Q9BXX0

SDS-PAGE



 Tel: 1-631-559-9269 1-516-512-3133

 Email: info@creative-biomart.com  Fax: 1-631-938-8127

 45-1 Ramsey Road, Shirley, NY 11967, USA