

Recombinant Human EML2 Protein (Gly375-Val649), N-His tagged

Cat. No. EML2-2880H Lot. No. (See product label)

SPECIFICATION

Product Overview	Recombinant human EML2 (Gly375-Val649) protein fused with the N-His tag was expressed in E. coli.
Species	Human
Source	E.coli
ProteinLength	Gly375-Val649
Molecular Mass	32.20 kDa
Purity	>90 % as determined by SDS-PAGE.
Notes	For research use only.
Storage	Use a manual defrost freezer and avoid repeated freeze thaw cycles. Store at 2 to 8 centigrade for one week. Store at -20 to -80 centigrade for twelve months from the date of receipt.
Storage Buffer	0.01M PBS, pH 7.4, 0.02 % NLS
Reconstitution	Reconstitute in sterile water for a stock solution.
Shipping	In general, proteins are provided as lyophilized powder/frozen liquid. They are

 Tel: 1-631-559-9269 1-516-512-3133

 Email: info@creative-biomart.com  Fax: 1-631-938-8127

 45-1 Ramsey Road, Shirley, NY 11967, USA

shipped out with dry ice/blue ice unless customers require otherwise.

GENE INFORMATION

Gene Name EML2 echinoderm microtubule associated protein like 2 [Homo sapiens (human)]

Official Symbol EML2

Synonyms EML2; echinoderm microtubule associated protein like 2; echinoderm microtubule-associated protein-like 2; echinoderm MT associated protein (EMAP) like protein 70; ELP70; EMAP 2; EMAP2; microtubule associated protein like echinoderm EMAP; microtubule-associated protein like echinoderm EMAP; echinoderm MT-associated protein (EMAP) -like protein 70; EMAP-2;

Gene ID 24139

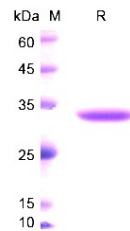
mRNA Refseq NM_001193268

Protein Refseq NP_001180197

MIM 617494

UniProt ID O95834

SDS-PAGE



Tel: 1-631-559-9269 1-516-512-3133

Email: info@creative-biomart.com Fax: 1-631-938-8127

45-1 Ramsey Road, Shirley, NY 11967, USA