

Recombinant Human EML2 Protein, GST-tagged

Cat. No. EML2-3284H **Lot. No.** (See product label)

SPECIFICATION

Product Overview	Human EML2 full-length ORF (AAH32630, 1 a.a. - 427 a.a.) recombinant protein with GST-tag at N-terminal.
Species	Human
Source	Wheat Germ
Description	EML2 (Echinoderm Microtubule Associated Protein Like 2) is a Protein Coding gene. GO annotations related to this gene include receptor binding and protein C-terminus binding. An important paralog of this gene is EML1.
Molecular Mass	72.71 kDa
AA Sequence	MSSFAGGKTKEVIFSVEDGSKMFLRGRPVPMIPDELAPTYSLDTRSELPSCLKL EWVYGYRGRDCRANLYLLPTGEIVYFVASVAVLYSVEEQRQRHYLGHNDIKCLAIH PDMVTIATGQVAGTTKEGKPLPPHVRIWDSVSLSTLHVLGLGVFDRAVCCVGFSSK NGGNLLCAVDESNDHMLSVWDWAKETKVVDVKCSNEAVLVATFHPTDPTVLITCGK SHIYFWTLEGGSLSKRQGLFEKHEKPKYVLCVTFLEGGDVVTGDSGGNLYVWGKG GNRITQAVLGAHDGGVFGLCALRDGTLVSGGGRDRRVVLWGSYSLQVEVEVPED FGPVRTVAEGHGDTLVVGTTNRNSILQGSVHTGFSLLVQGHVEELWGLATHPSRAQF VTCGQDKLVHLWSSDSHQPLWSRIIEMAAAGHGDP
Applications	Enzyme-linked Immunoabsorbent Assay Western Blot (Recombinant protein) Antibody Production

 Tel: 1-631-559-9269 1-516-512-3133

 Email: info@creative-biomart.com  Fax: 1-631-938-8127

 45-1 Ramsey Road, Shirley, NY 11967, USA

Protein Array

Notes	Best use within three months from the date of receipt of this protein.
Storage	Store at -80 centigrade. Aliquot to avoid repeated freezing and thawing.
Storage Buffer	50 mM Tris-HCl, 10 mM reduced Glutathione, pH=8.0 in the elution buffer.

GENE INFORMATION

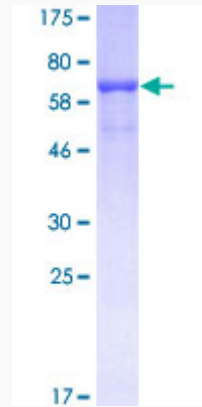
Gene Name	EML2 echinoderm microtubule associated protein like 2 [Homo sapiens]
Official Symbol	EML2
Synonyms	EML2; echinoderm microtubule associated protein like 2; echinoderm microtubule-associated protein-like 2; echinoderm MT associated protein (EMAP) like protein 70; ELP70; EMAP 2; EMAP2; microtubule associated protein like echinoderm EMAP; microtubule-associated protein like echinoderm EMAP; echinoderm MT-associated protein (EMAP)-like protein 70; EMAP-2;
Gene ID	24139
mRNA Refseq	NM_001193268
Protein Refseq	NP_001180197
MIM	617494
UniProt ID	O95834

 Tel: 1-631-559-9269 1-516-512-3133

 Email: info@creative-biomart.com  Fax: 1-631-938-8127

 45-1 Ramsey Road, Shirley, NY 11967, USA

**Quality Control
Testing**



12.5% SDS-PAGE Stained with Coomassie Blue.

 Tel: 1-631-559-9269 1-516-512-3133

 Email: info@creative-biomart.com  Fax: 1-631-938-8127

 45-1 Ramsey Road, Shirley, NY 11967, USA