

Recombinant Human EML2 Protein (1-418 aa), His-SUMO-tagged

Cat. No. EML2-481H **Lot. No.** (See product label)

SPECIFICATION

Product Overview	Recombinant Human EML2 Protein (1-418 aa) is produced by E. coli expression system. This protein is fused with a 6xHis-SUMO tag at the N-terminal. Research Area: Neuroscience. Protein Description: Partial.
Species	Human
Source	E.coli
ProteinLength	1-418 aa
Description	Tubulin binding protein that inhibits microtubule nucleation and growth, resulting in shorter microtubules.
Form	Tris-based buffer, 50% glycerol
Molecular Mass	61.8 kDa
AA Sequence	MSSFGAGKTKEVIFSVEDGSVKMFLRGRPVPMMIPDELAPTYSLDTRSELPSCRLKLEWVYGYRGRDCRANLYLLPTGEIVYFVASVAVLYSVEEQRQRHYLGHNDDIKCLAIHPDMVTIATGQVAGTTKEGKPLPPHVRIWDSVSLSTLHVLGLGVFDRAVCCVGFSSKSNNGNLLCAVDESNDHMLSVDWAKETKVVDVKCSNEAVLVATFHPTDPTVLITCGKSHIYFWTLEGGSLSKRQGLFEKHEKPKYVLCVTFLEGGDVVTGDSGGNLYVWGKGNRITQAVLGAHDGGVFGLCALRDGTLVSGGGRDRRVVLWGSYDYSKLQEVEVPEDFGPVRTVAEGHGD TLYVGTTRNSILQGSVHTGF SLLVQGHVEELWGLATHPSRAQF

 Tel: 1-631-559-9269 1-516-512-3133

 Email: info@creative-biomart.com  Fax: 1-631-938-8127

 45-1 Ramsey Road, Shirley, NY 11967, USA

VTCGQDKLVHLWSSDSHQPLWSRIIE

Purity > 90% as determined by SDS-PAGE.

Notes Repeated freezing and thawing is not recommended. Store working aliquots at 4 centigrade for up to one week.

Storage The shelf life is related to many factors, storage state, buffer ingredients, storage temperature and the stability of the protein itself. Generally, the shelf life of liquid form is 6 months at -20 centigrade/-80 centigrade. The shelf life of lyophilized form is 12 months at -20 centigrade/-80 centigrade.

Concentration A hardcopy of COA with concentration instruction is sent along with the products.

GENE INFORMATION

Gene Name [EML2 echinoderm microtubule associated protein like 2 \[Homo sapiens \]](#)

Official Symbol [EML2](#)

Synonyms EML2; ELP70; EMAP 2; EMAP2; EMAP-2;

Gene ID [24139](#)

mRNA Refseq [NM_001193268](#)

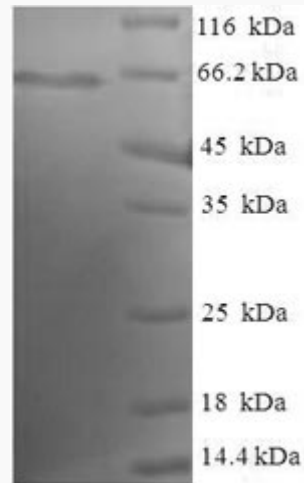
Protein Refseq [NP_001180197](#)

UniProt ID [O95834](#)

 Tel: 1-631-559-9269 1-516-512-3133

 Email: info@creative-biomart.com  Fax: 1-631-938-8127

 45-1 Ramsey Road, Shirley, NY 11967, USA



(Tris-Glycine gel) Discontinuous SDS-PAGE (reduced) with 5% enrichment gel and 15% separation gel.

Tel: 1-631-559-9269 1-516-512-3133

Email: info@creative-biomart.com Fax: 1-631-938-8127

45-1 Ramsey Road, Shirley, NY 11967, USA