

Recombinant Full Length Human EMP1 Protein, C-Flag-tagged

Cat. No. EMP1-1460HFL Lot. No. (See product label)

SPECIFICATION

Product Overview	Recombinant Full Length Human EMP1 Protein, fused to Flag-tag at C-terminus, was expressed in Mammalian cells.
Species	Human
Source	Mammalian Cells
Description	Involved in bleb assembly and cell death. Located in plasma membrane.
Form	25 mM Tris HCl, pH 7.3, 100 mM glycine, 10% glycerol.
Molecular Mass	17.4 kDa
AA Sequence	MLVLLAGIFVVHIATVIMLFVSTIANVWLVSNTVDASVGLWKNCTNISCSDSLSEYASED ALKTVQAFMIL SIIFCVIALLVFVFQLFTMEKGNRFFLSGATTLVCWLCILVGVSITYTSH YANRDGTQYHHGYSYILGWIC FCFSFIIGVLYLVLRKKTRTRPLEQKLISEEDLAANDILDYKDDDDKV
Purity	> 80% as determined by SDS-PAGE and Coomassie blue staining.
Stability	Stable for 12 months from the date of receipt of the product under proper storage and handling conditions. Avoid repeated freeze-thaw cycles.
Storage	Store at -80 centigrade.

 Tel: 1-631-559-9269 1-516-512-3133

 Email: info@creative-biomart.com  Fax: 1-631-938-8127

 45-1 Ramsey Road, Shirley, NY 11967, USA

Concentration	>50 ug/mL as determined by microplate BCA method.
Preparation	Recombinant protein was captured through anti-DDK affinity column followed by conventional chromatography steps.
Protein Families	Transmembrane
Full Length	Full L.

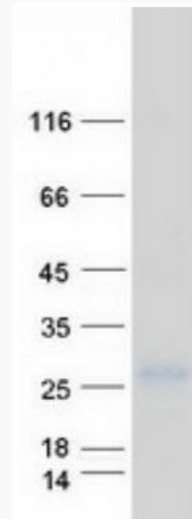
GENE INFORMATION

Gene Name	EMP1 epithelial membrane protein 1 [Homo sapiens (human)]
Official Symbol	EMP1
Synonyms	TMP; CL-20; EMP-1
Gene ID	2012
mRNA Refseq	NM_001423.3
Protein Refseq	NP_001414.1
MIM	602333
UniProt ID	P54849

 Tel: 1-631-559-9269 1-516-512-3133

 Email: info@creative-biomart.com  Fax: 1-631-938-8127

 45-1 Ramsey Road, Shirley, NY 11967, USA



Coomassie blue staining of purified EMP1 protein.

 Tel: 1-631-559-9269 1-516-512-3133

 Email: info@creative-biomart.com  Fax: 1-631-938-8127

 45-1 Ramsey Road, Shirley, NY 11967, USA