

## Recombinant Human EMP1 Protein, GST-tagged

Cat. No. EMP1-3286H Lot. No. (See product label)

### SPECIFICATION

<b>Product Overview</b>	Human EMP1 full-length ORF ( AAH47300, 1 a.a. - 157 a.a.) recombinant protein with GST-tag at N-terminal.
<b>Species</b>	Human
<b>Source</b>	Wheat Germ
<b>Description</b>	EMP1 (Epithelial Membrane Protein 1) is a Protein Coding gene. Diseases associated with EMP1 include Endobronchial Lipoma. An important paralog of this gene is EMP2.
<b>Molecular Mass</b>	43.01 kDa
<b>AA Sequence</b>	MLVLLAGIFVVHIATVIMLFVSTIANVWLVSNTVDASVGLWKNCTNISCSDSLSYASED ALKTVQAFMILSIIFCVIALLVFVQLFTMEKGNRFFLSGATTLVCWLCILVGVSIYTSH YANRDGTQYHHGYSYILGWICFCFSFIIGVLYLVLRKK
<b>Applications</b>	Enzyme-linked Immunoabsorbent Assay Western Blot (Recombinant protein) Antibody Production Protein Array
<b>Notes</b>	Best use within three months from the date of receipt of this protein.
<b>Storage</b>	Store at -80 centigrade. Aliquot to avoid repeated freezing and thawing.

 Tel: 1-631-559-9269 1-516-512-3133

 Email: [info@creative-biomart.com](mailto:info@creative-biomart.com)  Fax: 1-631-938-8127

 45-1 Ramsey Road, Shirley, NY 11967, USA

**Storage Buffer** 50 mM Tris-HCl, 10 mM reduced Glutathione, pH=8.0 in the elution buffer.

## GENE INFORMATION

**Gene Name** EMP1 epithelial membrane protein 1 [ Homo sapiens ]

**Official Symbol** EMP1

**Synonyms** epithelial membrane protein 1; 3333; Ensembl:ENSG00000134531; epithelial membrane protein 1;tumor-associated membrane protein; TMP; CL-20; EMP-1

**Gene ID** 2012

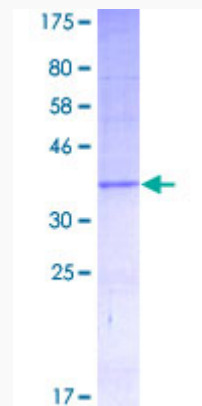
**mRNA Refseq** NM\_001423

**Protein Refseq** NP\_001414

**MIM** 602333

**UniProt ID** P54849

**Quality Control Testing**



Tel: 1-631-559-9269 1-516-512-3133

Email: [info@creative-biomart.com](mailto:info@creative-biomart.com) Fax: 1-631-938-8127

45-1 Ramsey Road, Shirley, NY 11967, USA



12.5% SDS-PAGE Stained with Coomassie Blue.

 Tel: 1-631-559-9269 1-516-512-3133

 Email: [info@creative-biomart.com](mailto:info@creative-biomart.com)  Fax: 1-631-938-8127

 45-1 Ramsey Road, Shirley, NY 11967, USA