

Active Recombinant Human EMP2 Full Length Transmembrane protein(Nanodisc)

Cat. No. EMP2-203H Lot. No. (See product label)

SPECIFICATION

Product Overview

Recombinant Human EMP2 Full Length Transmembrane protein(P54851), was expressed in HEK293.

Species

Human

Source

HEK293

Form

Lyophilized from nanodisc solubilization buffer (20 mM Tris-HCl, 150 mM NaCl, pH 8.0). Normally 5% – 8% trehalose is added as protectants before lyophilization. Please see Certificate of Analysis for specific instructions.

Bio-activity

Elisa plates were pre-coated with Flag Tag EMP2-Nanodisc (0.2µg/per well). Serial diluted anti-Flag monoclonal antibody solutions were added, washed, and incubated with secondary antibody before Elisa reading. From above data, the EC50 for anti-Flag monoclonal antibody binding with EMP2-Nanodisc is 4.249ng/ml.

Molecular Mass

The human full length EMP2 protein has a MW of 19.2 kDa.

Storage

Store at -20°C to -80°C for 12 months in lyophilized form. After reconstitution, if not intended for use within a month, aliquot and store at -80°C (Avoid repeated freezing and thawing). Lyophilized proteins are shipped at ambient temperature.

Reconstitution

It is recommended that sterile water be added to the vial to prepare a stock solution of 0.2 ug/ul. Centrifuge the vial at 4°C before opening to recover the entire contents.

 Tel: 1-631-559-9269 1-516-512-3133

 Email: info@creative-biomart.com  Fax: 1-631-938-8127

 45-1 Ramsey Road, Shirley, NY 11967, USA

Full Length Full L.

GENE INFORMATION

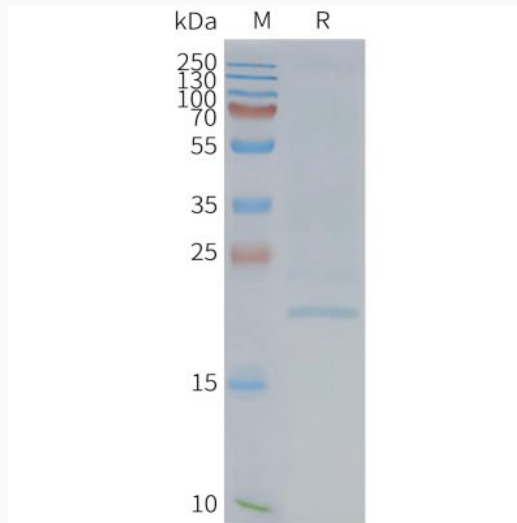
Gene Name	EMP2 epithelial membrane protein 2 [Homo sapiens]
Official Symbol	EMP2
Synonyms	EMP2; epithelial membrane protein 2; XMP; EMP-2; MGC9056;
Gene ID	2013
mRNA Refseq	NM_001424
Protein Refseq	NP_001415
MIM	602334
UniProt ID	P54851

 Tel: 1-631-559-9269 1-516-512-3133

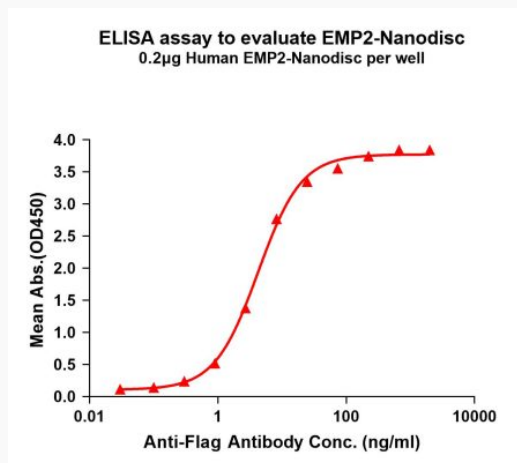
 Email: info@creative-biomart.com  Fax: 1-631-938-8127

 45-1 Ramsey Road, Shirley, NY 11967, USA

SDS-PAGE



Activity



 Tel: 1-631-559-9269 1-516-512-3133

 Email: info@creative-biomart.com  Fax: 1-631-938-8127

 45-1 Ramsey Road, Shirley, NY 11967, USA