

Recombinant Human EMP2 Protein, MYC/DDK-tagged, C13 and N15-labeled

Cat. No. EMP2-303H **Lot. No.** (See product label)

SPECIFICATION

Product Overview	EMP2 MS Standard C13 and N15-labeled recombinant protein (NP_001415) with a C-terminal MYC/DDK tag, was expressed in HEK293 cells.
Species	Human
Source	HEK293
Description	<p>This gene encodes a tetraspan protein of the PMP22/EMP family. The encoded protein regulates cell membrane composition. It has been associated with various functions including endocytosis, cell signaling, cell proliferation, cell migration, cell adhesion, cell death, cholesterol homeostasis, urinary albumin excretion, and embryo implantation. It is known to negatively regulate caveolin-1, a scaffolding protein which is the main component of the caveolae plasma membrane invaginations found in most cell types. Through activation of PTK2 it positively regulates vascular endothelial growth factor A. It also modulates the function of specific integrin isomers in the plasma membrane. Up-regulation of this gene has been linked to cancer progression in multiple different tissues. Mutations in this gene have been associated with nephrotic syndrome type 10 (NPHS10). [provided by RefSeq, Mar 2015]</p>
Molecular Mass	19.2 kDa
AA Sequence	MLVLLAFIIAFHITSAALLFIATVDNAWWVGDEFFADVWRICTNNTNCTVINDSFQEYS TLQAVQATMILSTILCCIAFFIFVLQLFRLKQGERFVLTSIIQLMSCLCVMIAASIYTD RR

 Tel: 1-631-559-9269 1-516-512-3133

 Email: info@creative-biomart.com  Fax: 1-631-938-8127

 45-1 Ramsey Road, Shirley, NY 11967, USA

EDIHDKNAKFYPVTREGSYGYSYILAWVAFACCTFISGMMYLILRKRKTRTRPLEQKLI
SEEDLAANDILDYKDDDDKV

Purity > 80% as determined by SDS-PAGE and Coomassie blue staining

Stability Stable for 3 months from receipt of products under proper storage and handling conditions.

Storage Store at -80 centigrade. Avoid repeated freeze-thaw cycles.

Concentration 50 µg/mL as determined by BCA

Storage Buffer 100 mM glycine, 25 mM Tris-HCl, pH 7.3.

GENE INFORMATION

Gene Name EMP2 epithelial membrane protein 2 [Homo sapiens (human)]

Official Symbol EMP2

Synonyms EMP2; epithelial membrane protein 2; XMP; EMP-2; MGC9056;

Gene ID 2013

mRNA Refseq NM_001424

Protein Refseq NP_001415

MIM 602334

UniProt ID P54851

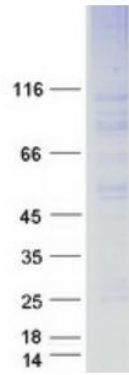
 Tel: 1-631-559-9269 1-516-512-3133

 Email: info@creative-biomart.com  Fax: 1-631-938-8127

 45-1 Ramsey Road, Shirley, NY 11967, USA



SDS-PAGE



Tel: 1-631-559-9269 1-516-512-3133

Email: info@creative-biomart.com Fax: 1-631-938-8127

45-1 Ramsey Road, Shirley, NY 11967, USA