

## Recombinant Human EMP2 Protein, GST-tagged

Cat. No. EMP2-3287H Lot. No. (See product label)

### SPECIFICATION

**Product Overview** Human EMP2 full-length ORF ( NP\_001415.1, 1 a.a. - 167 a.a.) recombinant protein with GST-tag at N-terminal.

**Species** Human

**Source** Wheat Germ

**Description** This gene encodes a tetraspan protein of the PMP22/EMP family. The encoded protein regulates cell membrane composition. It has been associated with various functions including endocytosis, cell signaling, cell proliferation, cell migration, cell adhesion, cell death, cholesterol homeostasis, urinary albumin excretion, and embryo implantation. It is known to negatively regulate caveolin-1, a scaffolding protein which is the main component of the caveolae plasma membrane invaginations found in most cell types. Through activation of PTK2 it positively regulates vascular endothelial growth factor A. It also modulates the function of specific integrin isomers in the plasma membrane. Up-regulation of this gene has been linked to cancer progression in multiple different tissues. Mutations in this gene have been associated with nephrotic syndrome type 10 (NPHS10). [provided by RefSeq, Mar 2015]

**Molecular Mass** 45.6 kDa

**AA Sequence** MLVLLAFIIAFHITSAALLFIATVDNAWWVGDEFFADVWRICTNNTNCTVINDSFQEYS  
TLQAVQATMILSTILCCIAFFIFVLQLFRLKQGERFVLTSIIQLMSCLCVMIAASIYTD  
EDIHDKNAKFYPVTREGSYGYSYILAWVAFACTFISGMMYLILRKRK

 Tel: 1-631-559-9269 1-516-512-3133

 Email: [info@creative-biomart.com](mailto:info@creative-biomart.com)  Fax: 1-631-938-8127

 45-1 Ramsey Road, Shirley, NY 11967, USA

<b>Applications</b>	Enzyme-linked Immunoabsorbent Assay Western Blot (Recombinant protein) Antibody Production Protein Array
<b>Notes</b>	Best use within three months from the date of receipt of this protein.
<b>Storage</b>	Store at -80 centigrade. Aliquot to avoid repeated freezing and thawing.
<b>Storage Buffer</b>	50 mM Tris-HCl, 10 mM reduced Glutathione, pH=8.0 in the elution buffer.

## GENE INFORMATION

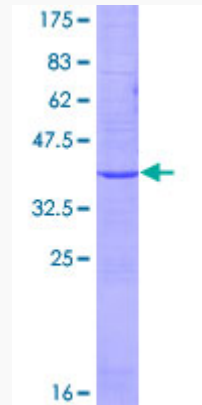
<b>Gene Name</b>	EMP2 epithelial membrane protein 2 [ Homo sapiens ]
<b>Official Symbol</b>	EMP2
<b>Synonyms</b>	EMP2; epithelial membrane protein 2; XMP; EMP-2; MGC9056;
<b>Gene ID</b>	2013
<b>mRNA Refseq</b>	NM_001424
<b>Protein Refseq</b>	NP_001415
<b>MIM</b>	602334
<b>UniProt ID</b>	P54851

 Tel: 1-631-559-9269 1-516-512-3133

 Email: [info@creative-biomart.com](mailto:info@creative-biomart.com)  Fax: 1-631-938-8127

 45-1 Ramsey Road, Shirley, NY 11967, USA

**Quality Control  
Testing**



12.5% SDS-PAGE Stained with Coomassie Blue.

 Tel: 1-631-559-9269 1-516-512-3133

 Email: [info@creative-biomart.com](mailto:info@creative-biomart.com)  Fax: 1-631-938-8127

 45-1 Ramsey Road, Shirley, NY 11967, USA