

Recombinant Human EMP3 Protein, GST-tagged

Cat. No. EMP3-3288H Lot. No. (See product label)

SPECIFICATION

Product Overview	Human EMP3 full-length ORF (AAH09718, 1 a.a. - 163 a.a.) recombinant protein with GST-tag at N-terminal.
Species	Human
Source	Wheat Germ
Description	The protein encoded by this gene belongs to the PMP-22/EMP/MP20 family of proteins. The protein contains four transmembrane domains and two N-linked glycosylation sites. It is thought to be involved in cell proliferation, cell-cell interactions and function as a tumor suppressor. Alternative splicing results in multiple transcript variants. [provided by RefSeq, Sep 2015]
Molecular Mass	43.67 kDa
AA Sequence	MSLLLLVVSALHILILILFVATLDKSWWTLPGKESLNLWYDCTWNNDTKTWACSNVS ENGWLKAVQVLMVLSLILCCLSFILFMFQLYTMRRGGLFYATGLCQLCTSVAVFTGA LIYAIHAEIELEKHPRGGSFGYCFALAWVAFPLALVSGIYIHLRKRE
Applications	Enzyme-linked Immunoabsorbent Assay Western Blot (Recombinant protein) Antibody Production Protein Array
Notes	Best use within three months from the date of receipt of this protein.

 Tel: 1-631-559-9269 1-516-512-3133

 Email: info@creative-biomart.com  Fax: 1-631-938-8127

 45-1 Ramsey Road, Shirley, NY 11967, USA

Storage Store at -80 centigrade. Aliquot to avoid repeated freezing and thawing.

Storage Buffer 50 mM Tris-HCl, 10 mM reduced Glutathione, pH=8.0 in the elution buffer.

GENE INFORMATION

Gene Name EMP3 epithelial membrane protein 3 [Homo sapiens]

Official Symbol EMP3

Synonyms EMP3; epithelial membrane protein 3; YMP; EMP-3; HNMP-1; hematopoietic neural membrane protein 1;

Gene ID 2014

mRNA Refseq NM_001425

Protein Refseq NP_001416

MIM 602335

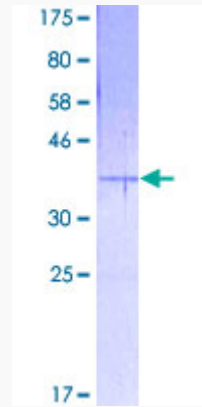
UniProt ID P54852

 Tel: 1-631-559-9269 1-516-512-3133

 Email: info@creative-biomart.com  Fax: 1-631-938-8127

 45-1 Ramsey Road, Shirley, NY 11967, USA

**Quality Control
Testing**



12.5% SDS-PAGE Stained with Coomassie Blue.

 Tel: 1-631-559-9269 1-516-512-3133

 Email: info@creative-biomart.com  Fax: 1-631-938-8127

 45-1 Ramsey Road, Shirley, NY 11967, USA