

## Recombinant Human EMR1 Protein, GST-tagged

Cat. No. EMR1-3292H Lot. No. (See product label)

### SPECIFICATION

<b>Product Overview</b>	Human EMR1 full-length ORF ( AAH59395.1, 1 a.a. - 821 a.a.) recombinant protein with GST-tag at N-terminal.
<b>Species</b>	Human
<b>Source</b>	Wheat Germ
<b>Description</b>	This gene encodes a protein that has a domain resembling seven transmembrane G protein-coupled hormone receptors (7TM receptors) at its C-terminus. The N-terminus of the encoded protein has six EGF-like modules, separated from the transmembrane segments by a serine/threonine-rich domain, a feature reminiscent of mucin-like, single-span, integral membrane glycoproteins with adhesive properties. Multiple alternatively spliced transcript variants encoding different isoforms have been found for this gene. [provided by RefSeq, Jan 2012]
<b>Molecular Mass</b>	116.8 kDa
<b>AA Sequence</b>	MRGFNLLLFWGCCVMHSWEGHIRPTRKPNTKGNNCRDSTLCPAYATCTNTVDSYY CACKQGFLSSNGQNHFKDPGVRCKDIDECSQSPQPCGPNSSCKNLSGRYKCSCLD GFSSPTGNDWVPGKPGNFSCDINECLTSSVCPEHSDCVNSMGSYSCSCQVGFIS RNSTCEDVDECADPRACPEHATCNNTVGNYSFCNPGFESSSGHLSFQGLKASCE DIDECTEMCPINSTCTNTPGSYFCTCHPGFAPSNQQLNFTDQGVECRDIDECRQDP STCGPNSICTNALGSYSCGCIAGFHPNPEGSQKDGNFSCQRVLFKCKEDVIPDNKQI QQCQEGTAVKPAYVSFCAQINNIFSVLDKVCENKTTVVSLKNTTESFVPVLKQISTWT

 Tel: 1-631-559-9269 1-516-512-3133

 Email: [info@creative-biomart.com](mailto:info@creative-biomart.com)  Fax: 1-631-938-8127

 45-1 Ramsey Road, Shirley, NY 11967, USA

KFTKEETSSLATVFLESVESMTLASFWKPSANITPAVRTEYLDIESKVINKECSEENVTL  
 LDLVAKGDKMKIGCSTIEESESTETTGVAFVSFVGMESVLNERFFKDHQAPLTTSEIK  
 LKMNSRVVGGIMTGEKKDGFSDPIIYTLENIQPKQKFERPICVSWSTDVKGGRWTSF  
 GCVILEASETYTICSCNQMANLAIIMASGELTMGCAIAGFLHYLFLACFFWMLVEAVIL  
 FLMVRNLKVVNYFSSRNIMLHICAFGYGLPMLVVVISASVQPQGYGMHNRCWLNT  
 ETGFIWSFLGPVCTVIVINSLLLWTWLRQLSSVNAEVSTLKDTRLLTFKAFAQLFI  
 LGCSWVLGIFQIGPVAGVMAYLFTIINSLQGAFIFLIHCLLNGQVREEYKRWITGKTKP  
 SSQSQTSRILLSSMPSASKTG

**Applications**

Enzyme-linked Immunoabsorbent Assay  
 Western Blot (Recombinant protein)  
 Antibody Production  
 Protein Array

**Notes**

Best use within three months from the date of receipt of this protein.

**Storage**

Store at -80 centigrade. Aliquot to avoid repeated freezing and thawing.

**Storage Buffer**

50 mM Tris-HCl, 10 mM reduced Glutathione, pH=8.0 in the elution buffer.

## GENE INFORMATION

**Gene Name**

[EMR1](#) [egf-like module containing, mucin-like, hormone receptor-like 1 \[ Homo sapiens \]](#)

**Official Symbol**

[EMR1](#)

**Synonyms**

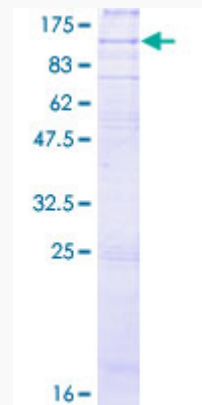
EMR1; egf-like module containing, mucin-like, hormone receptor-like 1; egf like module containing, mucin like, hormone receptor like sequence 1 , TM7LN3; EGF-like module-containing mucin-like hormone receptor-like 1; EMR1 hormone receptor; EGF-like module receptor 1; egf-like module containing, mucin-like, hormone

 Tel: 1-631-559-9269 1-516-512-3133

 Email: [info@creative-biomart.com](mailto:info@creative-biomart.com)  Fax: 1-631-938-8127

 45-1 Ramsey Road, Shirley, NY 11967, USA

receptor-like sequence 1; TM7LN3;

**Gene ID** 2015**mRNA Refseq** NM\_001256252**Protein Refseq** NP\_001243181**MIM** 600493**UniProt ID** Q14246**Quality Control  
Testing**

12.5% SDS-PAGE Stained with Coomassie Blue.

 Tel: 1-631-559-9269 1-516-512-3133 Email: [info@creative-biomart.com](mailto:info@creative-biomart.com)  Fax: 1-631-938-8127 45-1 Ramsey Road, Shirley, NY 11967, USA