

## Recombinant Human EMR1 protein, GST-tagged

Cat. No. EMR1-7853H Lot. No. (See product label)

### SPECIFICATION

<b>Product Overview</b>	Recombinant Human EMR1 protein(430-510 aa), fused with N-terminal GST tag, was expressed in E. coli.
<b>Species</b>	Human
<b>Source</b>	E.coli
<b>ProteinLength</b>	430-510 aa
<b>Form</b>	The purified protein was Lyophilized from sterile PBS (58mM Na <sub>2</sub> HPO <sub>4</sub> , 17mM NaH <sub>2</sub> PO <sub>4</sub> , 68mM NaCl, pH7.4). 5 % trehalose and 5 % mannitol are added as protectant before lyophilization.
<b>Storage</b>	Short-term storage: Store at 2-8°C for (1-2 weeks). Long-term storage: Aliquot and store at -20°C to -80°C for up to 3 months, reconstitution with sterile water and addition of an equal volume of glycerol. Avoid repeat freeze-thaw cycles.
<b>AA Sequence</b>	TEYLDIESKVINKECSEENVTLDLVAKGDKMKIGCSTIEESESTETTGVAFVSFVGME SVLNERFFKDHQAPLTTSEIKLK
<b>Purity</b>	85%, by SDS-PAGE with Coomassie Brilliant Blue staining.

### GENE INFORMATION

**Official Symbol** [EMR1](#)

 Tel: 1-631-559-9269 1-516-512-3133

 Email: [info@creative-biomart.com](mailto:info@creative-biomart.com)  Fax: 1-631-938-8127

 45-1 Ramsey Road, Shirley, NY 11967, USA

**Synonyms** EMR1; egf-like module containing, mucin-like, hormone receptor-like 1; egf like module containing, mucin like, hormone receptor like sequence 1 , TM7LN3; EGF-like module-containing mucin-like hormone receptor-like 1; EMR1 hormone receptor; EGF-like module receptor 1; egf-like module containing, mucin-like, hormone receptor-like sequence 1; TM7LN3;

**Gene ID** 2015

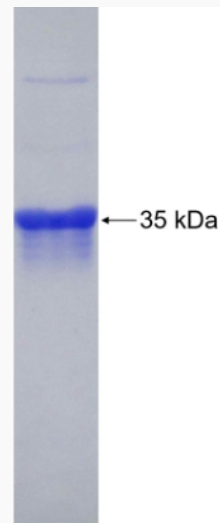
**mRNA Refseq** NM\_001256252

**Protein Refseq** NP\_001243181

**MIM** 600493

**UniProt ID** Q14246

**SDS-PAGE**



 Tel: 1-631-559-9269 1-516-512-3133

 Email: [info@creative-biomart.com](mailto:info@creative-biomart.com)  Fax: 1-631-938-8127

 45-1 Ramsey Road, Shirley, NY 11967, USA