

Active Recombinant Human EMR2 protein, hFc-tagged

Cat. No. EMR2-358H Lot. No. (See product label)

SPECIFICATION

Product Overview	Recombinant Human EMR2 protein(Q9UHX3)(Gln24-Thr540), fused with hFc tag, was expressed in HEK293.
Species	Human
Source	HEK293
ProteinLength	Gln24-Thr540
Form	Lyophilized from 0.22 µm filtered solution in PBS, pH7.4.
Bio-activity	When Recombinant Human EMR2(1-540) / hFC Protein is immobilized at 2g/mL (100 µ/well), the concentration of Recombinant Anti-EMR2 Antibody(Clone:hSC93.256) that produces 50% of the optimal binding response is approximately 0.2ug/ml.
Molecular Mass	The protein has a calculated MW of 82kDa.The reducing (R) heterodimer protein migrates as 30-40 kDa and 70-100kDa due to glycosylation
Endotoxin	<1EU/mg
Purity	SDS-PAGE>95%
Storage	Store at -20°C.
Reconstitution	sterile H12O

 Tel: 1-631-559-9269 1-516-512-3133

 Email: info@creative-biomart.com  Fax: 1-631-938-8127

 45-1 Ramsey Road, Shirley, NY 11967, USA

GENE INFORMATION

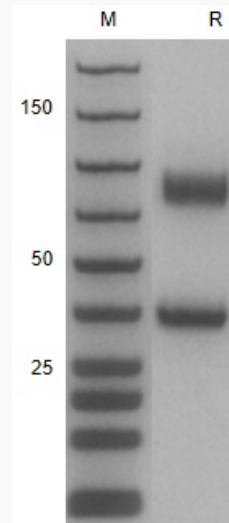
Gene Name	EMR2 egf-like module containing, mucin-like, hormone receptor-like 2 [Homo sapiens]
Official Symbol	EMR2
Synonyms	EMR2; egf-like module containing, mucin-like, hormone receptor-like 2; egf like module containing, mucin like, hormone receptor like sequence 2; EGF-like module-containing mucin-like hormone receptor-like 2; CD312; EGF-like module receptor 2; egf-like module containing, mucin-like, hormone receptor-like sequence 2; DKFZp781B135;
Gene ID	30817
mRNA Refseq	NM_013447
Protein Refseq	NP_038475
MIM	606100
UniProt ID	Q9UHX3

 Tel: 1-631-559-9269 1-516-512-3133

 Email: info@creative-biomart.com  Fax: 1-631-938-8127

 45-1 Ramsey Road, Shirley, NY 11967, USA

SDS-PAGE



ELISA

 Tel: 1-631-559-9269 1-516-512-3133

 Email: info@creative-biomart.com  Fax: 1-631-938-8127

 45-1 Ramsey Road, Shirley, NY 11967, USA