

## Active Recombinant Human EMR2 protein, His-tagged

Cat. No. EMR2-394H Lot. No. (See product label)

### SPECIFICATION

<b>Product Overview</b>	Recombinant Human EMR2 protein(Q9UHX3)(Met1-Thr540), fused with His tag, was expressed in HEK293.
<b>Species</b>	Human
<b>Source</b>	HEK293
<b>ProteinLength</b>	Met1-Thr540
<b>Form</b>	Lyophilized from 0.22 $\mu$ m filtered solution in PBS, pH7.4.
<b>Bio-activity</b>	When Recombinant Human EMR2(1-540) / His Protein is immobilized at 2 $\mu$ g/mL (100 $\mu$ /well), the concentration of Recombinant Anti-EMR2 Antibody(Clone:hSC93.256) that produces 50% of the optimal binding response is approximately 78 ng/ml.
<b>Molecular Mass</b>	The protein has a calculated MW of 58kDa.The reducing (R) heterodimer protein migrates as 70-100 kDa due to glycosylation
<b>Endotoxin</b>	<1EU/mg
<b>Purity</b>	SDS-PAGE>95%SEC>90%
<b>Storage</b>	Store at -20°C.
<b>Reconstitution</b>	sterile H13O

 Tel: 1-631-559-9269 1-516-512-3133

 Email: [info@creative-biomart.com](mailto:info@creative-biomart.com)  Fax: 1-631-938-8127

 45-1 Ramsey Road, Shirley, NY 11967, USA

## GENE INFORMATION

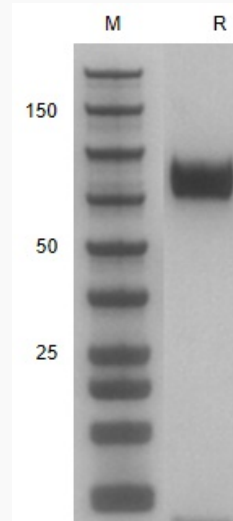
<b>Gene Name</b>	EMR2 egf-like module containing, mucin-like, hormone receptor-like 2 [ Homo sapiens ]
<b>Official Symbol</b>	EMR2
<b>Synonyms</b>	EMR2; egf-like module containing, mucin-like, hormone receptor-like 2; egf like module containing, mucin like, hormone receptor like sequence 2; EGF-like module-containing mucin-like hormone receptor-like 2; CD312; EGF-like module receptor 2; egf-like module containing, mucin-like, hormone receptor-like sequence 2; DKFZp781B135;
<b>Gene ID</b>	30817
<b>mRNA Refseq</b>	NM_013447
<b>Protein Refseq</b>	NP_038475
<b>MIM</b>	606100
<b>UniProt ID</b>	Q9UHX3

 Tel: 1-631-559-9269 1-516-512-3133

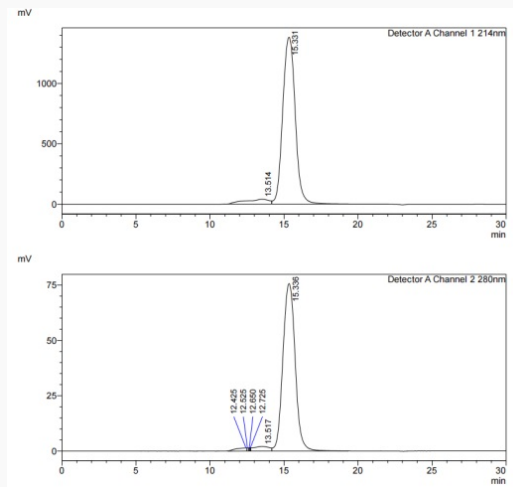
 Email: [info@creative-biomart.com](mailto:info@creative-biomart.com)  Fax: 1-631-938-8127

 45-1 Ramsey Road, Shirley, NY 11967, USA

**SDS-PAGE**



**SDS-HPLC**



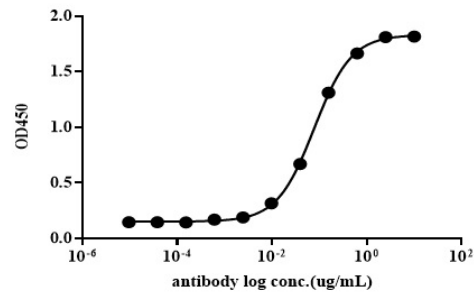
 Tel: 1-631-559-9269 1-516-512-3133

 Email: [info@creative-biomart.com](mailto:info@creative-biomart.com)  Fax: 1-631-938-8127

 45-1 Ramsey Road, Shirley, NY 11967, USA



ELISA



Tel: 1-631-559-9269 1-516-512-3133

Email: [info@creative-biomart.com](mailto:info@creative-biomart.com) Fax: 1-631-938-8127

45-1 Ramsey Road, Shirley, NY 11967, USA