

Recombinant Human ENC1 Protein, GST-tagged

Cat. No. ENC1-3302H Lot. No. (See product label)

SPECIFICATION

Product Overview	Human ENC1 full-length ORF (NP_003624.1, 1 a.a. - 589 a.a.) recombinant protein with GST-tag at N-terminal.
Species	Human
Source	Wheat Germ
Description	This gene encodes a member of the kelch-related family of actin-binding proteins. The encoded protein plays a role in the oxidative stress response as a regulator of the transcription factor Nrf2, and expression of this gene may play a role in malignant transformation. Alternatively spliced transcript variants encoding multiple isoforms have been observed for this gene. [provided by RefSeq, Feb 2012]
Molecular Mass	92.5 kDa
AA Sequence	MSVSVHENRKSRRASSGSINIYLFHKSSYADSVLTHLNLLRQQRLFTDVLLHAGNRTF PCHRAVLAACSRIFEAMFSGGLKESQDSEVNFNDSIHPEVLELLLDYAYSSRVIINEE NAESLLEAGDMLEFQDIRDACAEFLEKNLHPTNCLGMLLLSDAHQCTKLYELSWRM CLSNFQTIRKNEDFLQLPQDMVVQLLSSEELETERLVYESAINWISYDLKKRYCYL PELLQTVRLALLPAIYLMENVAMEELITKQRKSKEIVEEAIRCKLKILQNDGVVTSLCA RPRKTGHALFLLGGQTFMCDKLYLVDQKAKEIIPKADIPSPRKEFSACAIGCKVYITG GRGSENGVSKDVVYDTLHEEWSKAAPMLVARFGHGS AELKHCLYVVGHTAAT GCLPASPSVSLKQVEHYDPTINKWMTMVAPLREGVSNAAVVS AKLKLFAFGGTSVSH DKLPKVQCYDQCENRWTVPATCPQPWRYTAAAVLGNQIFIMGGDTEFSACSAYKF

Tel: 1-631-559-9269 1-516-512-3133

Email: info@creative-biomart.com Fax: 1-631-938-8127

45-1 Ramsey Road, Shirley, NY 11967, USA

NSETYQWTKVGDVTAKRMSCHAVASGNKLYVVGGYFGIQRCKTLDCYDPTLDVWN
SITTVPYSLIPTAFVSTWKHLPS

Applications
Enzyme-linked Immunoabsorbent Assay
Western Blot (Recombinant protein)
Antibody Production
Protein Array

Notes Best use within three months from the date of receipt of this protein.

Storage Store at -80 centigrade. Aliquot to avoid repeated freezing and thawing.

Storage Buffer 50 mM Tris-HCl, 10 mM reduced Glutathione, pH=8.0 in the elution buffer.

GENE INFORMATION

Gene Name [ENC1 ectodermal-neural cortex 1 \(with BTB-like domain\) \[Homo sapiens \]](#)

Official Symbol [ENC1](#)

Synonyms ENC1; ectodermal-neural cortex 1 (with BTB-like domain); NRPB; ectoderm-neural cortex protein 1; ENC 1; kelch like 37 (Drosophila); KLHL37; PIG10; TP53I10; kelch-like 35; kelch-like protein 37; p53-induced gene 10 protein; nuclear matrix protein NRP/B; tumor protein p53 inducible protein 10; nuclear restricted protein, BTB domain-like (brain); CCL28; ENC-1; KLHL35; FLJ39259; FLJ57577;

Gene ID [8507](#)

mRNA Refseq [NM_001256574](#)

Protein Refseq [NP_001243503](#)

 Tel: 1-631-559-9269 1-516-512-3133

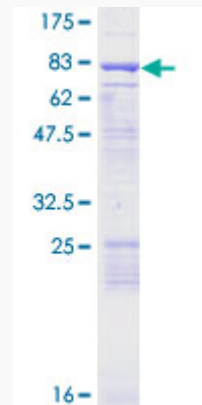
 Email: info@creative-biomart.com  Fax: 1-631-938-8127

 45-1 Ramsey Road, Shirley, NY 11967, USA

MIM 605173

UniProt ID O14682

**Quality Control
Testing**



12.5% SDS-PAGE Stained with Coomassie Blue.

 Tel: 1-631-559-9269 1-516-512-3133

 Email: info@creative-biomart.com  Fax: 1-631-938-8127

 45-1 Ramsey Road, Shirley, NY 11967, USA