

Recombinant Human ENC1 Protein, Myc/DDK-tagged, C13 and N15-labeled

Cat. No. ENC1-5156H Lot. No. (See product label)

SPECIFICATION

Product Overview

ENC1 MS Standard C13 and N15-labeled recombinant protein (NP_003624) with a C-terminal MYC/DDK tag, was expressed in HEK293 cells.

Species

Human

Source

HEK293

Description

This gene encodes a member of the kelch-related family of actin-binding proteins. The encoded protein plays a role in the oxidative stress response as a regulator of the transcription factor Nrf2, and expression of this gene may play a role in malignant transformation. Alternatively spliced transcript variants encoding multiple isoforms have been observed for this gene.

Molecular Mass

66.1 kDa

AA Sequence

MSVSVHENRKSRRASSGSINIYLFHKSSYADSVLTHLNLLRQQRLFTDVLLHAGNRTF
 PCHRAVLAACSRIFEAMFSGGLKESQDSEVNFDNSIHPEVLELLLDYAYSSRVIINEE
 NAESLLEAGDMLEFQDIRDACADEFLEKNLHPTNCLGMLLLSDAHQCTKLYELSWRM
 CLSNFQTIRKNEDFLQLPQDMVVQLLSSEELETEDERLVYESAINWISYDLKKRYCYL
 PELLQTVRLALLPAIYLMENVAMEELITKQRKSKEIVEEAIRCKLKILQNDGVVTSLCA
 RPRKTGHALFLLGGQTFMCDKLYLVDQKAKEIIPKADIPSPRKEFSACAIGCKVYITG
 GRGSENGVSKDVVYDTLHEEWSKAAPMLVARFGHGS AELKHCLYVVGHTAAT
 GCLPASPSVSLKQVEHYDPTINKWTMVAPLREGVSNAAVVS AKLKLFAFGGTSVSH

Tel: 1-631-559-9269 1-516-512-3133

Email: info@creative-biomart.com Fax: 1-631-938-8127

45-1 Ramsey Road, Shirley, NY 11967, USA

DKLPKVQCYDQCENRWTPATCPQPWRYTAAAVLGNQIFIMGGDTEFSACSAYKF
 NSETYQWTKVGDVTAKRMSCHAVASGNKLYVGGYFGIQRCKTLDCYDPTLDVWN
 SITTPYSLIPTAFVSTWKHLPSTRTRPLEQKLISEEDLAANDILDYKDDDDKV

Purity > 80% as determined by SDS-PAGE and Coomassie blue staining

Stability Stable for 3 months from receipt of products under proper storage and handling conditions.

Storage Store at -80 centigrade. Avoid repeated freeze-thaw cycles.

Concentration 50 µg/mL as determined by BCA

Storage Buffer 100 mM glycine, 25 mM Tris-HCl, pH 7.3.

GENE INFORMATION

Gene Name [ENC1 ectodermal-neural cortex 1 \[Homo sapiens \(human\) \]](#)

Official Symbol [ENC1](#)

Synonyms ENC1; ectodermal-neural cortex 1 (with BTB-like domain); NRPB; ectoderm-neural cortex protein 1; ENC 1; kelch like 37 (Drosophila); KLHL37; PIG10; TP53I10; kelch-like 35; kelch-like protein 37; p53-induced gene 10 protein; nuclear matrix protein NRP/B; tumor protein p53 inducible protein 10; nuclear restricted protein, BTB domain-like (brain); CCL28; ENC-1; KLHL35; FLJ39259; FLJ57577;

Gene ID [8507](#)

mRNA Refseq [NM_003633](#)

 Tel: 1-631-559-9269 1-516-512-3133

 Email: info@creative-biomart.com  Fax: 1-631-938-8127

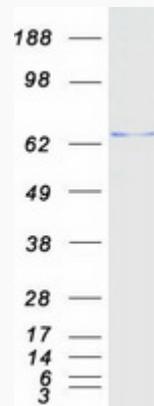
 45-1 Ramsey Road, Shirley, NY 11967, USA

Protein Refseq NP_003624

MIM 605173

UniProt ID O14682

SDS-PAGE



Tel: 1-631-559-9269 1-516-512-3133

Email: info@creative-biomart.com Fax: 1-631-938-8127

45-1 Ramsey Road, Shirley, NY 11967, USA