

Recombinant Human ENO1 Protein

Cat. No. ENO1-002H Lot. No. (See product label)

SPECIFICATION

Product Overview	Recombinant full length human ENO1 protein (1-434) without tag was expressed in E. coli.
Species	Human
Source	E.coli
ProteinLength	1-434
Description	<p>This gene encodes alpha-enolase, one of three enolase isoenzymes found in mammals. Each isoenzyme is a homodimer composed of 2 alpha, 2 gamma, or 2 beta subunits, and functions as a glycolytic enzyme. Alpha-enolase in addition, functions as a structural lens protein (tau-crystallin) in the monomeric form.</p> <p>Alternative splicing of this gene results in a shorter isoform that has been shown to bind to the c-myc promoter and function as a tumor suppressor. Several pseudogenes have been identified, including one on the long arm of chromosome 1. Alpha-enolase has also been identified as an autoantigen in Hashimoto encephalopathy.</p>
Form	TBS, pH 7.4
Molecular Mass	47.74 kDa
Purity	≥90% estimated by SDS-PAGE

 Tel: 1-631-559-9269 1-516-512-3133

 Email: info@creative-biomart.com  Fax: 1-631-938-8127

 45-1 Ramsey Road, Shirley, NY 11967, USA

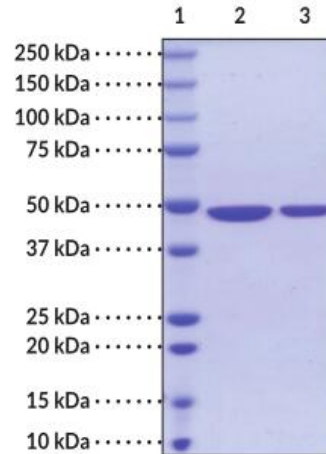
Stability	≥ 1 year
Storage	Store at -80 centigrade
Shipping	Dry ice in continental US; may vary elsewhere
GENE INFORMATION	
Gene Name	ENO1 enolase 1 [Homo sapiens (human)]
Official Symbol	ENO1
Synonyms	ENO1; enolase 1; NNE; PPH; MPB1; ENO1L1; HEL-S-17; alpha-enolase; c-myc promoter-binding protein-1; 2-phospho-D-glycerate hydro-lyase; MYC promoter-binding protein 1; alpha enolase like 1; enolase 1, (alpha); enolase-alpha; epididymis secretory protein Li 17; non-neural enolase; phosphopyruvate hydratase; plasminogen-binding protein; tau-crystallin; EC 4.2.1.11
Gene ID	2023
mRNA Refseq	NM_001201483
Protein Refseq	NP_001188412
MIM	172430
UniProt ID	P06733

 Tel: 1-631-559-9269 1-516-512-3133

 Email: info@creative-biomart.com  Fax: 1-631-938-8127

 45-1 Ramsey Road, Shirley, NY 11967, USA

**SDS-PAGE analysis
of citrullinated α -
enolase.**

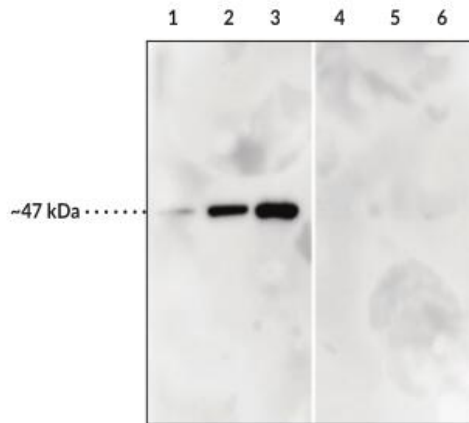


Lane 1: MW Markers

Lane 2: 4 μ g α -Enolase (PADI4 Citrullinated)

Lane 3: 2 μ g α -Enolase (PADI4 Citrullinated)

**Western blot
analysis of α -enolase
citrullination.**



α -Enolase and citrullinated α -enolase were reacted with Citrullinated α -Enolase

Tel: 1-631-559-9269 1-516-512-3133

Email: info@creative-biomart.com Fax: 1-631-938-8127

45-1 Ramsey Road, Shirley, NY 11967, USA



Monoclonal Anybody (Clone 8D3) and detected using Goat And Mouse IgG HRP.

Lane 1: Citrullinated α -Enolase (20 ng)


Lane 2: Citrullinated α -Enolase (100 ng)

Lane 3: Citrullinated α -Enolase (400 ng)


Lane 4: α -Enolase (20 ng)

Lane 5: α -Enolase (100 ng)

Lane 6: α -Enolase (400 ng)

 Tel: 1-631-559-9269 1-516-512-3133

 Email: info@creative-biomart.com  Fax: 1-631-938-8127

 45-1 Ramsey Road, Shirley, NY 11967, USA