

## Recombinant Human ENO1 Protein

Cat. No. ENO1-004H Lot. No. (See product label)

### SPECIFICATION

<b>Product Overview</b>	Recombinant full length human ENO1 protein (1-434) without tag was expressed in E. coli.
<b>Species</b>	Human
<b>Source</b>	E.coli
<b>ProteinLength</b>	1-434
<b>Description</b>	<p>This gene encodes alpha-enolase, one of three enolase isoenzymes found in mammals. Each isoenzyme is a homodimer composed of 2 alpha, 2 gamma, or 2 beta subunits, and functions as a glycolytic enzyme. Alpha-enolase in addition, functions as a structural lens protein (tau-crystallin) in the monomeric form.</p> <p>Alternative splicing of this gene results in a shorter isoform that has been shown to bind to the c-myc promoter and function as a tumor suppressor. Several pseudogenes have been identified, including one on the long arm of chromosome 1. Alpha-enolase has also been identified as an autoantigen in Hashimoto encephalopathy.</p>
<b>Form</b>	20 mM HEPES, pH 7.5, 150 mM sodium chloride, and 5% glycerol
<b>Molecular Mass</b>	47.74 kDa
<b>Purity</b>	≥95% estimated by SDS-PAGE

 Tel: 1-631-559-9269 1-516-512-3133

 Email: [info@creative-biomart.com](mailto:info@creative-biomart.com)  Fax: 1-631-938-8127

 45-1 Ramsey Road, Shirley, NY 11967, USA

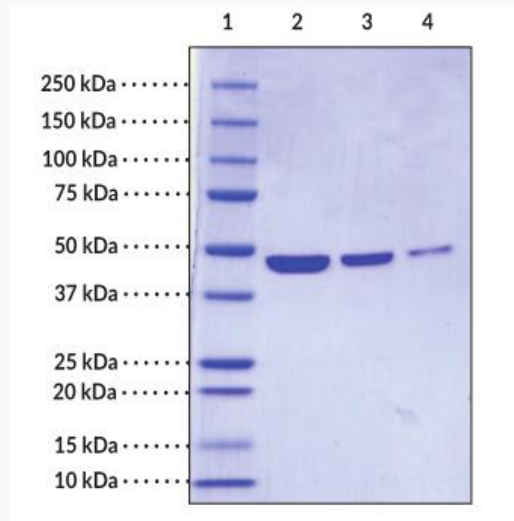
<b>Stability</b>	≥ 1 year
<b>Storage</b>	Store at -80 centigrade
<b>Shipping</b>	Dry ice in continental US; may vary elsewhere
<b>GENE INFORMATION</b>	
<b>Gene Name</b>	ENO1 enolase 1 [ Homo sapiens (human) ]
<b>Official Symbol</b>	ENO1
<b>Synonyms</b>	ENO1; enolase 1; NNE; PPH; MPB1; ENO1L1; HEL-S-17; alpha-enolase; c-myc promoter-binding protein-1; 2-phospho-D-glycerate hydro-lyase; MYC promoter-binding protein 1; alpha enolase like 1; enolase 1, (alpha); enolase-alpha; epididymis secretory protein Li 17; non-neural enolase; phosphopyruvate hydratase; plasminogen-binding protein; tau-crystallin; EC 4.2.1.11
<b>Gene ID</b>	2023
<b>mRNA Refseq</b>	NM_001201483
<b>Protein Refseq</b>	NP_001188412
<b>MIM</b>	172430
<b>UniProt ID</b>	P06733

 Tel: 1-631-559-9269 1-516-512-3133

 Email: [info@creative-biomart.com](mailto:info@creative-biomart.com)  Fax: 1-631-938-8127

 45-1 Ramsey Road, Shirley, NY 11967, USA

**SDS-PAGE analysis  
of citrullinated  $\alpha$ -  
enolase.**



Lane 1: MW Markers  
Lane 2:  $\alpha$ -Enolase (5 g)  
Lane 3:  $\alpha$ -Enolase (2.5 g)  
Lane 4:  $\alpha$ -Enolase (1 g)

 Tel: 1-631-559-9269 1-516-512-3133

 Email: [info@creative-biomart.com](mailto:info@creative-biomart.com)  Fax: 1-631-938-8127

 45-1 Ramsey Road, Shirley, NY 11967, USA