

Recombinant Human ENO1 Protein

Cat. No. ENO1-022H Lot. No. (See product label)

SPECIFICATION

Product Overview	Recombinant full length human ENO1 protein (1-434) without tag was purified from E. coli citrullinated by PAD4.
Species	Human
Source	E.coli
ProteinLength	1-434
Description	<p>This gene encodes alpha-enolase, one of three enolase isoenzymes found in mammals. Each isoenzyme is a homodimer composed of 2 alpha, 2 gamma, or 2 beta subunits, and functions as a glycolytic enzyme. Alpha-enolase in addition, functions as a structural lens protein (tau-crystallin) in the monomeric form.</p> <p>Alternative splicing of this gene results in a shorter isoform that has been shown to bind to the c-myc promoter and function as a tumor suppressor. Several pseudogenes have been identified, including one on the long arm of chromosome 1. Alpha-enolase has also been identified as an autoantigen in Hashimoto encephalopathy.</p>
Molecular Mass	47.74 kDa
Purity	≥90% as determined by SDS-PAGE
Stability	≥ 6 months

 Tel: 1-631-559-9269 1-516-512-3133

 Email: info@creative-biomart.com  Fax: 1-631-938-8127

 45-1 Ramsey Road, Shirley, NY 11967, USA

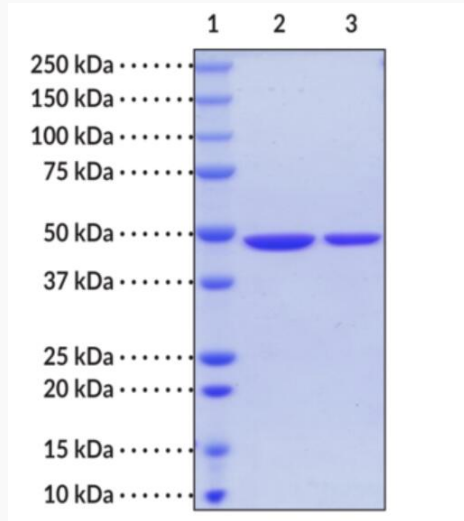
Storage	At -80 centigrade.
Storage Buffer	TBS, pH 7.4
GENE INFORMATION	
Gene Name	ENO1 enolase 1 [Homo sapiens (human)]
Official Symbol	ENO1
Synonyms	ENO1; enolase 1; NNE; PPH; MPB1; ENO1L1; HEL-S-17; alpha-enolase; c-myc promoter-binding protein-1; 2-phospho-D-glycerate hydro-lyase; MYC promoter-binding protein 1; alpha enolase like 1; enolase 1, (alpha); enolase-alpha; epididymis secretory protein Li 17; non-neural enolase; phosphopyruvate hydratase; plasminogen-binding protein; tau-crystallin; EC 4.2.1.11
Gene ID	2023
mRNA Refseq	NM_001428
Protein Refseq	NP_001419
MIM	172430
UniProt ID	P06733

 Tel: 1-631-559-9269 1-516-512-3133

 Email: info@creative-biomart.com  Fax: 1-631-938-8127

 45-1 Ramsey Road, Shirley, NY 11967, USA

**SDS-PAGE analysis
of citrullinated α -
enolase**

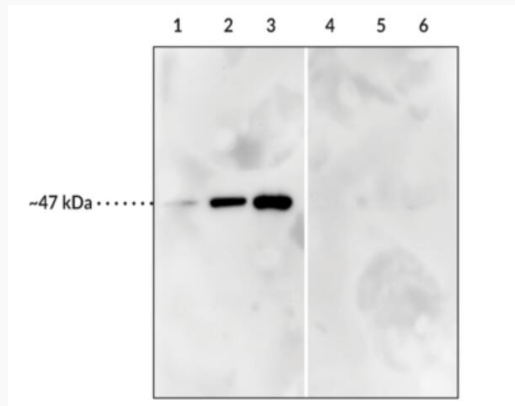


Lane 1: MW Markers

Lane 2: 4 μ g α -enolase (PAD4 Citrullinated)

Lane 3: 2 μ g α -enolase (PAD4 Citrullinated)

**WB analysis of α -
enolase citrullination**



Lane 1: Citrullinated α -enolase (20 ng)

Lane 2: Citrullinated α -enolase (100 ng)

Lane 3: Citrullinated α -enolase (400 ng)

Tel: 1-631-559-9269 1-516-512-3133

Email: info@creative-biomart.com Fax: 1-631-938-8127

45-1 Ramsey Road, Shirley, NY 11967, USA

Lane 4: α -enolase (20 ng)

Lane 5: α -enolase (100 ng)


Lane 6: α -enolase (400 ng)

α -enolase and Citrullinated α -enolase were reacted with Citrullinated α -enolase Monoclonal Antibody and detected using Goat Anti-Mouse IgG HRP.


Identification of modified sites in Citrullinated α -enolase.

MSILKIHARE	IFDS ¹²⁰ RGNPTV	EVDLFTSKGL	FRAAVPSGAS	TGIYEAL ¹⁵⁰ LR
DNDKT ⁶⁰ RYMGK	GVS ¹⁷⁰ KAVEHIN	KTIAPALVSK	CLNVTEQEKI	DKLMIEMDGT
ENKSKFGANA	ILGVSLAV ¹³⁰ CK	AGAVEKGVPL	Y ¹⁴⁰ RHIADLAGN	SEVILPVPAP
NVINGGSHAG	NKLAMQEFMI	LPVGAAN ¹⁸⁰ FRE	AMRIGAEVYH	NLKNVIKEY
GKDATNVGDE	GGFAPNILEN	KEGLELLKTA	IGKAGYTDKV	VIGMDVAASE
FF ²⁶⁰ RS ²⁶⁰ GKYDLD	FKSPDDPS ²⁷⁰ RY	ISPDQLADLY	KSFIDYPPV	SIEDPFDQDD
WGAWQKFTAS	AGIQVVGDDL	TVTNPRIAK	AVNEKSCNCL	LLKVNQIGSV
TESLQACKLA	QANGWGMVMS	HRSGETEDTF	IADLVVGLCT	GQIKTGAP ⁴⁰⁰ CR
SERLAKYNQL	LR ⁴²⁰ IEEELGSK	AKFAGR ⁴³⁰ NFRN	PLAK	

Citrullinated α -enolase was detected by LC-MS/MS and analyzed using Mascot and Scaffold PTM sofyware. Deiminated arginines are indicated in teal.

 Tel: 1-631-559-9269 1-516-512-3133

 Email: info@creative-biomart.com  Fax: 1-631-938-8127

 45-1 Ramsey Road, Shirley, NY 11967, USA