

Recombinant Human ENO1 Protein, 1-434aa

Cat. No. ENO1-1814H Lot. No. (See product label)

SPECIFICATION

Product Overview	Recombinant human alpha-enolase was expressed in E. coli and purified by using conventional chromatography.
Species	Human
Source	E.coli
ProteinLength	1-434aa
Description	Alpha-enolase, also known as Enolase 1, is one of three enolase isoenzymes and a glycolytic enzyme expressed in most tissues. This protein plays a key role in anaerobic metabolism under hypoxic conditions and may act as a cell surface plasminogen receptor during tissue invasion. Abnormal expression of alpha-enolase is associated with tumor progression in some cases of breast and lung cancer. It also has been identified as an autoantigen associated with Hashimoto's encephalopathy and severe asthma.
Form	Liquid
Bio-activity	> 20,000 pmol/min/μg, and was obtained by measuring the decrease of NAD in absorbance at 340 nm resulting from NADH at pH 6.5 at 37 centigrade.
Molecular Mass	47.1 kDa (434aa) confirmed by MALDI-TOF
AA Sequence	MSILKIHAREIFDSRGNPTVEVDLFTSKGLFRAAVPSGASTGIYEALELRDNDKTRYM

 Tel: 1-631-559-9269 1-516-512-3133

 Email: info@creative-biomart.com  Fax: 1-631-938-8127

 45-1 Ramsey Road, Shirley, NY 11967, USA

GKGVSKAVEHINKTIAPALVSKKLVNTEQEKIDKLMIEMDGTENKSKFGANAILGVSLA
 VCKAGAVEKGVPLYRHIADLAGNSEVILPVPFNVINGGSHAGNKLAMQEFMILPVG
 AANFREAMRIGAEVYHNLKNVIKEKYGKDATNVGDEGGFAPNILENKEGLELLKTAIG
 KAGYTDKVVIGMDVAASEFFRSGKYDLDFKSPDDPSRYISPDQLADLYKSFIDYYPV
 VSIEDPFDQDDWGAWQKFTASAGIQVVGDDLTVTNPKRIAKAVNEKSCNCLLLKVN
 QIGSVTESLQACKLAQANGWGMVSHRSGETEDTFIADLVVGLCTGQIKTGAPCRS
 ERLAKYNQLLRIEEEELGSKAKFAGRNRFRNPLAK

Endotoxin	< 1.0 EU/μg of the protein by the LAL method.
Purity	> 95% by SDS-PAGE
Applications	SDS-PAGE, Enzyme Activity
Storage	Can be stored at +2 to +8 centigrade for 1 week. For long term storage, aliquot and store at -20 to -80 centigrade. Avoid repeated freezing and thawing cycles.
Concentration	1 mg/mL (determined by Bradford assay)
Storage Buffer	20mM Tris-HCl buffer (pH 7.5) containing 1mM MgSO ₄ , 10% glycerol
References	<ol style="list-style-type: none"> 1. Das R., et al. (2009) Blood. 113(22):5371-2. 2. ueno NT., et al. (2008) Cancer Res. 68(22):9302-10.

GENE INFORMATION

Gene Name	ENO1 enolase 1, (alpha) [Homo sapiens (human)]
Official Symbol	ENO1
Synonyms	ENO1; enolase 1, (alpha); ENO1L1, MPB1; alpha-enolase; c-myc promoter-binding

 Tel: 1-631-559-9269 1-516-512-3133

 Email: info@creative-biomart.com  Fax: 1-631-938-8127

 45-1 Ramsey Road, Shirley, NY 11967, USA

protein-1; MBP 1; PPH; alpha-enolase; enolase-alpha; tau-crystallin; non-neural enolase; alpha enolase like 1; phosphopyruvate hydratase; plasminogen-binding protein; MYC promoter-binding protein 1; 2-phospho-D-glycerate hydro-lyase; NNE; MPB1; ENO1L1;

Gene ID 2023

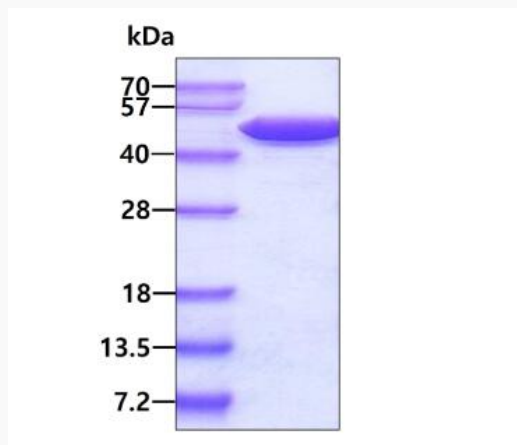
mRNA Refseq NM_001428

Protein Refseq NP_001419.1

MIM 172430

UniProt ID P06733

SDS-PAGE



3 µg by SDS-PAGE under reducing condition and visualized by coomassie blue stain.

 Tel: 1-631-559-9269 1-516-512-3133

 Email: info@creative-biomart.com  Fax: 1-631-938-8127

 45-1 Ramsey Road, Shirley, NY 11967, USA