

Recombinant Human ENO1 Protein (2-434 aa), His-Myc-tagged

Cat. No. ENO1-2760H Lot. No. (See product label)

SPECIFICATION

Product Overview	Recombinant Human ENO1 Protein (2-434 aa) is produced by Baculovirus expression system. This protein is fused with a 10xHis tag at the N-terminal and a Myc tag at the C-terminal. Research Area: Metabolism. Protein Description: Full Length of Mature Protein.
Species	Human
Source	Insect Cells
ProteinLength	2-434 aa
Description	Multifunctional enzyme that, as well as its role in glycolysis, plays a part in various processes such as growth control, hypoxia tolerance and allergic responses. May also function in the intravascular and pericellular fibrinolytic syst due to its ability to serve as a receptor and activator of plasminogen on the cell surface of several cell-types such as leukocytes and neurons. Stimulates immunoglobulin production.MBP1 binds to the myc promoter and acts as a transcriptional repressor. May be a tumor suppressor.
Form	Tris-based buffer,50% glycerol
Molecular Mass	51.0 kDa
AA Sequence	SILKIHAREIFDSRGNPTVEVDLFTSKGLFRAAVPSGASTGIYEALERDNDKTRYMG KGVSKAVEHINKTIAPALVSKKLVTEQEKIDKLMIEDMGTENKSKFGANAILGVSLAV

 Tel: 1-631-559-9269 1-516-512-3133

 Email: info@creative-biomart.com  Fax: 1-631-938-8127

 45-1 Ramsey Road, Shirley, NY 11967, USA

CKAGAVEKGVPLYRHIADLAGNSEVILPVPAFNVINGGSHAGNKLAMQEFMILPVGA
 ANFREAMRIGAEVYHNLKNVIKEKYGKDATNVGDEGGFAPNILENKEGLELLKTAIGK
 AGYTDKVVIGMDVAASEFFRSGKYDLDFKSPDDPSRYISPDQLADLYKSFIDYPPV
 SIEDPFDQDDWGAWQKFTASAGIQVVGDDLTVTNPKRIAKAVNEKSCNCLLLKVNQI
 GSVTESLQACKLAQANGWGMVSHRSGETEDTFIADLVVGLCTGQIKTGAPCRSER
 LAKYNQLLRIEEELGSKAKFAGRNFNPLAK

Purity > 85% as determined by SDS-PAGE.

Notes Repeated freezing and thawing is not recommended. Store working aliquots at 4 centigrade for up to one week.

Storage The shelf life is related to many factors, storage state, buffer ingredients, storage temperature and the stability of the protein itself. Generally, the shelf life of liquid form is 6 months at -20 centigrade/-80 centigrade. The shelf life of lyophilized form is 12 months at -20 centigrade/-80 centigrade.

Concentration A hardcopy of COA will be sent along with the products. Please refer to it for detailed information.

GENE INFORMATION

Gene Name ENO1 enolase 1, (alpha) [Homo sapiens]

Official Symbol ENO1

Synonyms ENO1; MBP 1; PPH; alpha-enolase; enolase-alpha; tau-crystallin; non-neural enolase; alpha enolase like 1; NNE; MPB1; ENO1L1;

Gene ID 2023

 Tel: 1-631-559-9269 1-516-512-3133

 Email: info@creative-biomart.com  Fax: 1-631-938-8127

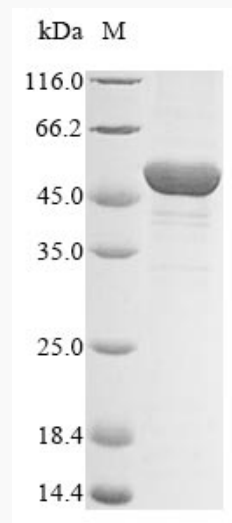
 45-1 Ramsey Road, Shirley, NY 11967, USA

mRNA Refseq [NM_001201483](#)

Protein Refseq [NP_001188412](#)

MIM [172430](#)

UniProt ID [P06733](#)



(Tris-Glycine gel) Discontinuous SDS-PAGE (reduced) with 5% enrichment gel and 15% separation gel.

 Tel: 1-631-559-9269 1-516-512-3133

 Email: info@creative-biomart.com  Fax: 1-631-938-8127

 45-1 Ramsey Road, Shirley, NY 11967, USA