

## Recombinant Human ENO1 Protein (Pro267-Leu354), N-His tagged

Cat. No. ENO1-2903H Lot. No. (See product label)

### SPECIFICATION

<b>Product Overview</b>	Recombinant human ENO1 (Pro267-Leu354) protein fused with the N-His tag was expressed in E. coli.
<b>Species</b>	Human
<b>Source</b>	E.coli
<b>ProteinLength</b>	Pro267-Leu354
<b>Molecular Mass</b>	12.07 kDa
<b>Purity</b>	>90 % as determined by SDS-PAGE.
<b>Notes</b>	For research use only.
<b>Storage</b>	Use a manual defrost freezer and avoid repeated freeze thaw cycles. Store at 2 to 8 centigrade for one week. Store at -20 to -80 centigrade for twelve months from the date of receipt.
<b>Storage Buffer</b>	Lyophilized from a solution in PBS pH 7.4, 0.02 % NLS, 1mM EDTA, 4 % Trehalose, 1 % Mannitol.
<b>Reconstitution</b>	Reconstitute in sterile water for a stock solution.

 Tel: 1-631-559-9269 1-516-512-3133

 Email: [info@creative-biomart.com](mailto:info@creative-biomart.com)  Fax: 1-631-938-8127

 45-1 Ramsey Road, Shirley, NY 11967, USA

**Shipping**

In general, proteins are provided as lyophilized powder/frozen liquid. They are shipped out with dry ice/blue ice unless customers require otherwise.

**GENE INFORMATION**
**Gene Name**

ENO1 enolase 1, (alpha) [ Homo sapiens (human) ]

**Official Symbol**

ENO1

**Synonyms**

ENO1; enolase 1, (alpha); ENO1L1, MPB1; alpha-enolase; c-myc promoter-binding protein-1; MBP 1; PPH; alpha-enolase; enolase-alpha; tau-crystallin; non-neural enolase; alpha enolase like 1; phosphopyruvate hydratase; plasminogen-binding protein; MYC promoter-binding protein 1; 2-phospho-D-glycerate hydro-lyase; NNE; MPB1; ENO1L1;

**Gene ID**

2023

**mRNA Refseq**

NM\_001201483

**Protein Refseq**

NP\_001188412

**MIM**

172430

**UniProt ID**

P06733

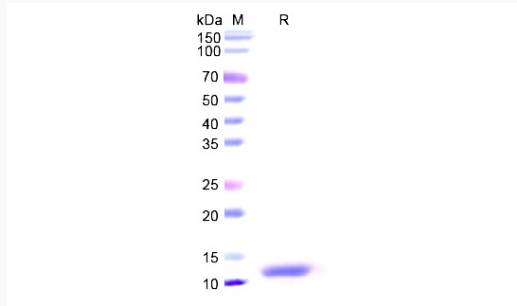
 Tel: 1-631-559-9269 1-516-512-3133

 Email: [info@creative-biomart.com](mailto:info@creative-biomart.com)  Fax: 1-631-938-8127

 45-1 Ramsey Road, Shirley, NY 11967, USA



SDS-PAGE



Tel: 1-631-559-9269 1-516-512-3133

Email: [info@creative-biomart.com](mailto:info@creative-biomart.com) Fax: 1-631-938-8127

45-1 Ramsey Road, Shirley, NY 11967, USA