

Recombinant Full Length Human ENO1 Protein, C-Flag-tagged

Cat. No. ENO1-30HFL Lot. No. (See product label)

SPECIFICATION

Product Overview	Recombinant Full Length Human ENO1 Protein, fused to Flag-tag at C-terminus, was expressed in Mammalian cells.
Species	Human
Source	Mammalian Cells
Description	<p>This gene encodes alpha-enolase, one of three enolase isoenzymes found in mammals. Each isoenzyme is a homodimer composed of 2 alpha, 2 gamma, or 2 beta subunits, and functions as a glycolytic enzyme. Alpha-enolase in addition, functions as a structural lens protein (tau-crystallin) in the monomeric form.</p> <p>Alternative splicing of this gene results in a shorter isoform that has been shown to bind to the c-myc promoter and function as a tumor suppressor. Several pseudogenes have been identified, including one on the long arm of chromosome 1. Alpha-enolase has also been identified as an autoantigen in Hashimoto encephalopathy.</p>
Form	25 mM Tris HCl, pH 7.3, 100 mM glycine, 10% glycerol.
Molecular Mass	47 kDa
AA Sequence	<p>MSILKIHAREIFDSRGNPTVEVDLFTSKGLFRAAVPSGASTGIYEALELRDNDKTRYM GKGVSKAVEHIN KTIAPALVSKKLNVTQEKEKIDKLMIEDMGTENKSKFGANAILGVSL AVCKAGAVEKGVPLYRHIADLAGN SEVILPVPFNVINGGSHAGNKLAMQEFMILPV GAANFREAMRIGAEVYHNLKNVIKEKYGKDATNVGDE GGFAPNILENKEGLELLKTA</p>

Tel: 1-631-559-9269 1-516-512-3133

Email: info@creative-biomart.com Fax: 1-631-938-8127

45-1 Ramsey Road, Shirley, NY 11967, USA

IGKAGYTDKVVIGMDVAASEFFRSGKYDLDFKSPDDPSRYISPDQLADLY KSFIDY
 PVVSIEDPFDQDDWGAWQKFTASAGIQVVGDDLTVTNPKRIAKAVNEKSCNCLLLKV
 NQIGSV TESLQACKLAQANGWGVMSHRSGETEDTFIADLVVGLCTGQIKTGAPCR
 SERLAKYNQLLRIEEEELGSK
 AKFAGRNFNRNPLAKTRTRPLEQKLISEEDLAANDILDYKDDDDKV

Purity > 80% as determined by SDS-PAGE and Coomassie blue staining.

Stability Stable for 12 months from the date of receipt of the product under proper storage and handling conditions. Avoid repeated freeze-thaw cycles.

Storage Store at -80 centigrade.

Concentration >50 ug/mL as determined by microplate BCA method.

Preparation Recombinant protein was captured through anti-DDK affinity column followed by conventional chromatography steps.

Protein Families Druggable Genome, Transcription Factors

Protein Pathways Glycolysis / Gluconeogenesis, Metabolic pathways, RNA degradation

Full Length Full L.

GENE INFORMATION

Gene Name ENO1 enolase 1 [Homo sapiens (human)]

Official Symbol ENO1

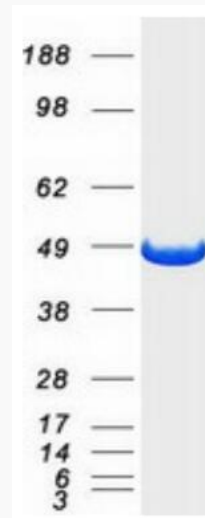
Synonyms NNE; PPH; MPB1; ENO1L1; HEL-S-17

 Tel: 1-631-559-9269 1-516-512-3133

 Email: info@creative-biomart.com  Fax: 1-631-938-8127

 45-1 Ramsey Road, Shirley, NY 11967, USA

Gene ID	2023
mRNA Refseq	NM_001428.5
Protein Refseq	NP_001419.1
MIM	172430
UniProt ID	P06733



Coomassie blue staining of purified ENO1 protein.

Tel: 1-631-559-9269 1-516-512-3133

Email: info@creative-biomart.com Fax: 1-631-938-8127

45-1 Ramsey Road, Shirley, NY 11967, USA