

## Recombinant Human ENO1 Protein, GST-tagged

Cat. No. ENO1-3309H Lot. No. (See product label)

### SPECIFICATION

<b>Product Overview</b>	Human ENO1 full-length ORF ( AAH11130.1, 1 a.a. - 434 a.a.) recombinant protein with GST-tag at N-terminal.
<b>Species</b>	Human
<b>Source</b>	Wheat Germ
<b>Description</b>	<p>This gene encodes alpha-enolase, one of three enolase isoenzymes found in mammals. Each isoenzyme is a homodimer composed of 2 alpha, 2 gamma, or 2 beta subunits, and functions as a glycolytic enzyme. Alpha-enolase in addition, functions as a structural lens protein (tau-crystallin) in the monomeric form.</p> <p>Alternative splicing of this gene results in a shorter isoform that has been shown to bind to the c-myc promoter and function as a tumor suppressor. Several pseudogenes have been identified, including one on the long arm of chromosome 1. Alpha-enolase has also been identified as an autoantigen in Hashimoto encephalopathy. [provided by RefSeq, Jan 2011]</p>
<b>Molecular Mass</b>	73.48 kDa
<b>AA Sequence</b>	<p>MSILKIHAREIFDSRGNPTVEVDLFTSKGLFRAAVPSGASTGIYEALELRDNDKTRYM            GKGVSKAVEHINKTIAPALVSKKLNVTQEKEIDKLMIEDGTENKSKFGANAILGVSLA            VCKAGAVEKGVPLYRHIADLAGNSEVILPVPAFNVINGGSHAGNKLAMQEFMILPVG            AANFREAMRIGAEVYHNLKNVIKEKYGKDATNVGDEGGFAPNILENKEGLELLKTAIG            KAGYTDKVVIGMDVAASEFFRSGKYDLDFKSPDDPSRYISPDQLADLYKSFIDYPV</p>

 Tel: 1-631-559-9269 1-516-512-3133

 Email: [info@creative-biomart.com](mailto:info@creative-biomart.com)  Fax: 1-631-938-8127

 45-1 Ramsey Road, Shirley, NY 11967, USA

VSIEDPFDQDDWGAWQKFTASAGIQVVGDDLTVTNPKRIAKAVNEKSCNCLLLKVN  
 QIGSVTESLQACKLAQANGWGVMSHRSGETEDTFIADLVVGLCTGQIKTGAPCRS  
 ERLAKYNQLLRIEEGLGSKAKFAGRNFRNPLAK

<b>Applications</b>	Enzyme-linked Immunoabsorbent Assay Western Blot (Recombinant protein) Antibody Production Protein Array
<b>Notes</b>	Best use within three months from the date of receipt of this protein.
<b>Storage</b>	Store at -80 centigrade. Aliquot to avoid repeated freezing and thawing.
<b>Storage Buffer</b>	50 mM Tris-HCl, 10 mM reduced Glutathione, pH=8.0 in the elution buffer.

## GENE INFORMATION

<b>Gene Name</b>	<a href="#">ENO1 enolase 1, (alpha) [ Homo sapiens ]</a>
<b>Official Symbol</b>	<a href="#">ENO1</a>
<b>Synonyms</b>	ENO1; enolase 1, (alpha); ENO1L1, MPB1; alpha-enolase; c-myc promoter-binding protein-1; MBP 1; PPH; alpha-enolase; enolase-alpha; tau-crystallin; non-neural enolase; alpha enolase like 1; phosphopyruvate hydratase; plasminogen-binding protein; MYC promoter-binding protein 1; 2-phospho-D-glycerate hydro-lyase; NNE; MPB1; ENO1L1;
<b>Gene ID</b>	<a href="#">2023</a>
<b>mRNA Refseq</b>	<a href="#">NM_001201483</a>

 Tel: 1-631-559-9269 1-516-512-3133

 Email: [info@creative-biomart.com](mailto:info@creative-biomart.com)  Fax: 1-631-938-8127

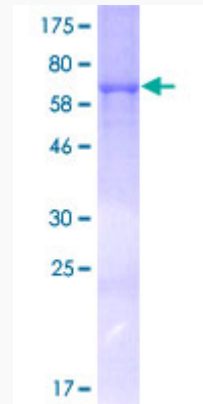
 45-1 Ramsey Road, Shirley, NY 11967, USA

**Protein Refseq** NP\_001188412

**MIM** 172430

**UniProt ID** P06733

**Quality Control  
Testing**



12.5% SDS-PAGE Stained with Coomassie Blue.

 Tel: 1-631-559-9269 1-516-512-3133

 Email: [info@creative-biomart.com](mailto:info@creative-biomart.com)  Fax: 1-631-938-8127

 45-1 Ramsey Road, Shirley, NY 11967, USA