

## Recombinant Human ENO1 protein, His-Myc-tagged

Cat. No. ENO1-5744H Lot. No. (See product label)

### SPECIFICATION

<b>Product Overview</b>	Recombinant Human ENO1 protein(P06733)(2-434aa), fused with C-terminal His and Myc tag, was expressed in Yeast.
<b>Species</b>	Human
<b>Source</b>	Yeast
<b>ProteinLength</b>	2-434aa
<b>Tag</b>	C-His-Myc
<b>Form</b>	If the delivery form is liquid, the default storage buffer is Tris/PBS-based buffer, 5%-50% glycerol. If the delivery form is lyophilized powder, the buffer before lyophilization is Tris/PBS-based buffer, 6% Trehalose, pH 8.0.
<b>Molecular Mass</b>	50.3 kDa
<b>Purity</b>	Greater than 90% as determined by SDS-PAGE.
<b>Storage</b>	Store at -20°C/-80°C upon receipt, aliquoting is necessary for mutiple use. Avoid repeated freeze-thaw cycles.
<b>Reconstitution</b>	We recommend that this vial be briefly centrifuged prior to opening to bring the contents to the bottom. Please reconstitute protein in deionized sterile water to a concentration of 0.1-1.0 mg/mL. We recommend to add 5-50% of glycerol (final

 Tel: 1-631-559-9269 1-516-512-3133

 Email: [info@creative-biomart.com](mailto:info@creative-biomart.com)  Fax: 1-631-938-8127

 45-1 Ramsey Road, Shirley, NY 11967, USA

concentration) and aliquot for long-term storage at -20°C/-80°C.

**AA Sequence**

SILKIHAREIFDSRGNPTVEVDLFTSKGLFRAAVPSGASTGIYEALELRDNDKTRYMG  
 KGVSKAVEHINKTIAPALVSKKLVTEQEKIDKLMIEDGTENKSKFGANAILGVSLAV  
 CKAGAVEKGVPLYRHIADLAGNSEVILPVPAFNVINGGSHAGNKLAMQEFMILPVGA  
 ANFREAMRIGAEVYHNLKNVIKEKYGKDATNVGDEGGFAPNILENKEGLELLKTAIGK  
 AGYTDKVVIGMDVAASEFFRSGKYDLDFKSPDDPSRYISPDQLADLYKSFIDYPPVV  
 SIEDPFDQDDWGAWQKFTASAGIQVVGDDLTVTNPKRIAKAVNEKSCNCLLLKVNQI  
 GSVTESLQACKLAQANGWGMVSHRSGETEDTFIADLVVGLCTGQIKTGAPCRSER  
 LAKYNQLLRIEEEELGSKAKFAGRNFNPLAK

## GENE INFORMATION

**Gene Name** [ENO1 enolase 1, \(alpha\) \[ Homo sapiens \]](#)

**Official Symbol** [ENO1](#)

**Synonyms** ENO1; enolase 1, (alpha); ENO1L1, MPB1; alpha-enolase; c-myc promoter-binding protein-1; MBP 1; PPH; alpha-enolase; enolase-alpha; tau-crystallin; non-neural enolase; alpha enolase like 1; phosphopyruvate hydratase; plasminogen-binding protein; MYC promoter-binding protein 1; 2-phospho-D-glycerate hydro-lyase; NNE; MPB1; ENO1L1;

**Gene ID** [2023](#)

**mRNA Refseq** [NM\\_001201483](#)

**Protein Refseq** [NP\\_001188412](#)

**MIM** [172430](#)

 Tel: 1-631-559-9269 1-516-512-3133

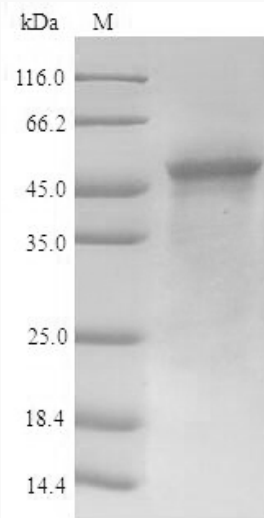
 Email: [info@creative-biomart.com](mailto:info@creative-biomart.com)  Fax: 1-631-938-8127

 45-1 Ramsey Road, Shirley, NY 11967, USA

UniProt ID

P06733

SDS-PAGE



 Tel: 1-631-559-9269 1-516-512-3133

 Email: [info@creative-biomart.com](mailto:info@creative-biomart.com)  Fax: 1-631-938-8127

 45-1 Ramsey Road, Shirley, NY 11967, USA