

Recombinant Cattle ENO1 protein, His-tagged

Cat. No. ENO1-6975C Lot. No. (See product label)

SPECIFICATION

Product Overview	Recombinant Cattle ENO1 aa. (Met1~Lys434 (Accession # Q9XSJ4)) fused with N-terminal His tag was produced in E. coli cells.
Species	Cattle
Source	E.coli
ProteinLength	Met1~Lys434
Form	Freeze-dried powder
Molecular Mass	Predicted Molecular Mass: 48.9kDa
Endotoxin	<1.0EU per 1ug (determined by the LAL method)
Purity	>95%
Characteristic	The isoelectric point is 6.5.
Applications	SDS-PAGE; WB; ELISA; IP
Stability	The thermal stability is described by the loss rate. The loss rate was determined by accelerated thermal degradation test, that is, incubate the protein at 37°C for 48h, and no obvious degradation and precipitation were observed. The loss rate is less than 5% within the expiration date under appropriate storage condition.

 Tel: 1-631-559-9269 1-516-512-3133

 Email: info@creative-biomart.com  Fax: 1-631-938-8127

 45-1 Ramsey Road, Shirley, NY 11967, USA

Storage	Avoid repeated freeze/thaw cycles. Store at 2-8°C for one month. Aliquot and store at -80°C for 12 months.
Storage buffer	Supplied as lyophilized form in PBS, pH7.4, containing 5% sucrose, 0.01% sarcosyl.
Reconstitution	Reconstitute in sterile PBS, pH7.2-pH7.4.

GENE INFORMATION

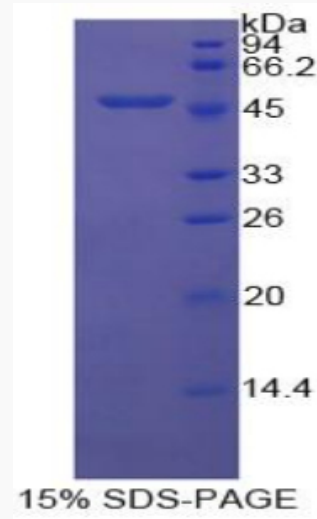
Gene Name	ENO1 enolase 1 [Bos taurus (cattle)]
Official Symbol	ENO1
Synonyms	ENO1; alpha-enolase; 2-phospho-D-glycerate hydro-lyase; HAP47; NNE; non-neural enolase; phosphopyruvate hydratase
Gene ID	281141
mRNA Refseq	NM_174049.2
Protein Refseq	NP_776474.2
UniProt ID	Q9XSJ4

 Tel: 1-631-559-9269 1-516-512-3133

 Email: info@creative-biomart.com  Fax: 1-631-938-8127

 45-1 Ramsey Road, Shirley, NY 11967, USA

SDS-PAGE



 Tel: 1-631-559-9269 1-516-512-3133

 Email: info@creative-biomart.com  Fax: 1-631-938-8127

 45-1 Ramsey Road, Shirley, NY 11967, USA