

Recombinant Human ENO1 protein, His-tagged

Cat. No. ENO1-7454H Lot. No. (See product label)

SPECIFICATION

Product Overview	Recombinant Human ENO1 protein(P06733)(449aa), fused with N-terminal His tag, was expressed in E. coli.
Species	Human
Source	E.coli
Protein Length	449aa(including fusion tag)
Tag	N-His
Form	20mM Tris.Cl, 50mM NaCl, 50% Glycerol, pH9.0.
Molecular Mass	49.1kDa(including fusion tag)
Storage	Store at -80°C and avoid repeated freeze-thaw cycles.
Reconstitution	It is recommended that sterile water be added to the vial to prepare a stock solution of 0.2 ug/ul. Centrifuge the vial at 4°C before opening to recover the entire contents.

GENE INFORMATION

Gene Name	ENO1 enolase 1, (alpha) [Homo sapiens]
Official Symbol	ENO1

 Tel: 1-631-559-9269 1-516-512-3133

 Email: info@creative-biomart.com  Fax: 1-631-938-8127

 45-1 Ramsey Road, Shirley, NY 11967, USA

Synonyms ENO1; enolase 1, (alpha); ENO1L1, MPB1; alpha-enolase; c-myc promoter-binding protein-1; MBP 1; PPH; alpha-enolase; enolase-alpha; tau-crystallin; non-neural enolase; alpha enolase like 1; phosphopyruvate hydratase; plasminogen-binding protein; MYC promoter-binding protein 1; 2-phospho-D-glycerate hydro-lyase; NNE; MPB1; ENO1L1;

Gene ID [2023](#)

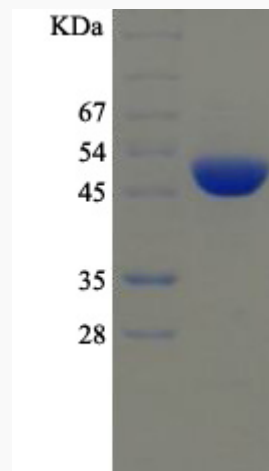
mRNA Refseq [NM_001201483](#)

Protein Refseq [NP_001188412](#)

MIM [172430](#)

UniProt ID [P06733](#)

SDS-PAGE



 Tel: 1-631-559-9269 1-516-512-3133

 Email: info@creative-biomart.com  Fax: 1-631-938-8127

 45-1 Ramsey Road, Shirley, NY 11967, USA