

Recombinant Human ENO1 Protein (Ser2-Lys434), N-His tagged, Animal-free, Carrier-free

Cat. No. ENO1-74H Lot. No. (See product label)

SPECIFICATION

Product Overview	Recombinant Human ENO1 Protein (Ser2-Lys434) with N-His tag was expressed in E. coli and Animal-free as well as Carrier-free.
Species	Human
Source	E.coli
ProteinLength	Ser2-Lys434
Description	Enolase 1 (ENO1) also named alpha-enolase which is a glycolytic enzyme. It could convert the NAD ⁺ to NADH by producing two ATP. ENO1 is a homodimer which is composed by two isozymes of enolase (2 α , 2 ν , or 2 β). It also plays an important role in cancer model which can promote tumor cell proliferation and migration by the PI3K signaling pathway. ENO1 is a biomarker of prognostic and diagnostic cancer.
Form	Lyophilized
Molecular Mass	The protein has a calculated MW of 47.85 kDa. The protein migrates as 55 kDa under reducing condition (SDS-PAGE analysis).
Endotoxin	< 0.1 EU/ μ g of the protein by the LAL method.
Purity	>98% as determined by SDS-PAGE analysis.

 Tel: 1-631-559-9269 1-516-512-3133

 Email: info@creative-biomart.com  Fax: 1-631-938-8127

 45-1 Ramsey Road, Shirley, NY 11967, USA

Storage	<p>This product is stable after storage at:</p> <p>-20 centigrade for 12 months in lyophilized state from date of receipt.</p> <p>-20 or -80 centigrade for 1 month under sterile conditions after reconstitution.</p> <p>Avoid repeated freeze/thaw cycles.</p>
Storage Buffer	Lyophilized from a 0.2 µm filtered solution of PBS with 7 mM MgSO ₄ , pH 7.2
Reconstitution	It is recommended to reconstitute the lyophilized protein in sterile H ₂ O to a concentration not less than 200 µg/mL and incubate the stock solution for at least 20 min to ensure sufficient re-dissolved.
Shipping	The product is shipped with polar packs. Upon receipt, store it immediately at -20 centigrade or lower for long term storage.

GENE INFORMATION

Gene Name	ENO1 enolase 1, (alpha) [Homo sapiens (human)]
Official Symbol	ENO1
Synonyms	ENO1; enolase 1, (alpha); ENO1L1, MPB1; alpha-enolase; c-myc promoter-binding protein-1; MBP 1; PPH; alpha-enolase; enolase-alpha; tau-crystallin; non-neural enolase; alpha enolase like 1; phosphopyruvate hydratase; plasminogen-binding protein; MYC promoter-binding protein 1; 2-phospho-D-glycerate hydro-lyase; NNE; MPB1; ENO1L1;
Gene ID	2023
mRNA Refseq	NM_001201483
Protein Refseq	NP_001188412

 Tel: 1-631-559-9269 1-516-512-3133

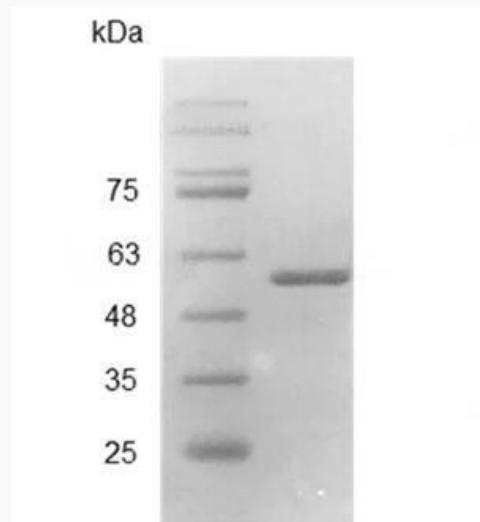
 Email: info@creative-biomart.com  Fax: 1-631-938-8127

 45-1 Ramsey Road, Shirley, NY 11967, USA

MIM 172430

UniProt ID P06733

**SDS-PAGE analysis
of recombinant
human ENO1.**



 Tel: 1-631-559-9269 1-516-512-3133

 Email: info@creative-biomart.com  Fax: 1-631-938-8127

 45-1 Ramsey Road, Shirley, NY 11967, USA