

Recombinant Human Benolase 2 (Gamma, Neuronal)

Cat. No. ENO2-1277H Lot. No. (See product label)

SPECIFICATION

Product Overview	Human Neurone Specific Enolase produced in Human CNS having a molecular mass of 45kDa.
Species	Human
Source	Human
Description	Neuron-specific enolase also called NSE is a glycolytic isoenzyme which is situated in central and peripheral neurons and neuroendocrine cells. Enolase-2 is released into the CSF when neural tissue is injured. Neoplasms derived from neural or neuroendocrine tissue release Enolase-2 into the blood. Enolase-2 is a useful substance that has been detected in patients with certain tumors, such as neuroblastoma, small cell lung cancer, medullary thyroid cancer, carcinoid tumors, pancreatic endocrine tumors, and melanoma. ENO2 is 1 of the 3 enolase isoenzymes found in mammals. ENO2 isoenzyme, is found in mature neurons and cells of neuronal origin. An exchange from alpha enolase to gamma enolase occurs in neural tissue during development in rats and primates.
Form	The protein solution is in 0.01M NaH ₂ PO ₄ buffer pH 7.4 containing 0.15M NaCl and 0.005M MgSO ₄ .
Purity	Greater than 96.0%.
Physical Appearance	Sterile Filtered clear solution.

 Tel: 1-631-559-9269 1-516-512-3133

 Email: info@creative-biomart.com  Fax: 1-631-938-8127

 45-1 Ramsey Road, Shirley, NY 11967, USA

Storage Human NSE although stable at 4°C for 1 week, should be stored at -15°C.

GENE INFORMATION

Gene Name ENO2 enolase 2 (gamma, neuronal) [Homo sapiens]

Official Symbol ENO2

Synonyms ENO2; NSE; enolase 2 (gamma, neuronal); enolase 2; neural enolase; neurone-specific enolase; neuron specific gamma enolase; 2-phospho-D-glycerate hydrolyase; EC 4.2.1.11; 2-phospho-D-glycerate hydro-lyase; 2-phospho-D-glycerate hydrolyase; Neuron-specific enolase; enolase 2 (gamma, neuronal); neuron specific gamma enolase; neurone-specific enolase.

Gene ID 2026

mRNA Refseq NM_001975

Protein Refseq NP_001966

MIM 131360

UniProt ID P09104

Chromosome Location 12p13

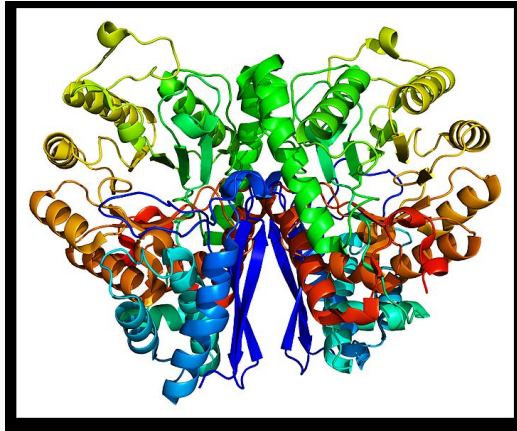
Function lyase activity; magnesium ion binding; phosphopyruvate hydratase activity

 Tel: 1-631-559-9269 1-516-512-3133

 Email: info@creative-biomart.com  Fax: 1-631-938-8127

 45-1 Ramsey Road, Shirley, NY 11967, USA

PDBrendering based
on 1te6.



 Tel: 1-631-559-9269 1-516-512-3133

 Email: info@creative-biomart.com  Fax: 1-631-938-8127

 45-1 Ramsey Road, Shirley, NY 11967, USA