

Recombinant Full Length Human ENO2 Protein, C-Flag-tagged

Cat. No. ENO2-171HFL Lot. No. (See product label)

SPECIFICATION

Product Overview Recombinant Full Length Human ENO2 Protein, fused to Flag-tag at C-terminus, was expressed in Mammalian cells.

Species Human

Source Mammalian Cells

Description This gene encodes one of the three enolase isoenzymes found in mammals. This isoenzyme, a homodimer, is found in mature neurons and cells of neuronal origin. A switch from alpha enolase to gamma enolase occurs in neural tissue during development in rats and primates.

Form 25 mM Tris HCl, pH 7.3, 100 mM glycine, 10% glycerol.

Molecular Mass 47.1 kDa

AA Sequence

```

MSIEKIWAREILDSRGNPTVEVDLYTAKGLFRAAVPSGASTGIYEALELRDGDKQRYL
GKGV LKAVDHIN STIAPALISSGLSVVEQEKL DNLMLELDGTENKSKFGANAILGVSL
AVCKAGAAERELPLYRHIAQLAGN SDLILPVP AFNVINGGSHAGNKLAMQEFMILPV
GAESFRDAMRLGAEVYHTLKGVIKDKYGKDATNVGDE GGFAPNILENSEALELVKE
AIDKAGYTEKIVIGMDVAASEFYRDGKYDLDFKSPTDPSRYITGDQLGALY QDFVRD
YPVVSIEDPFDQDDWAAWSKFTANVGIQIVGDDLTVTNPKRIERAVEEKACNCLLLK
VNQIGSV TEAIQACKLAQENGWGMVSHRSGETEDTFIADLVVGLCTGQIKTGAPC
RSERLAKYNQLMRIEEELGDE
ARFAGHNFRNPSVLTRTRPLEQKLISEEDLAANDILDYKDDDDKV
    
```

 Tel: 1-631-559-9269 1-516-512-3133

 Email: info@creative-biomart.com  Fax: 1-631-938-8127

 45-1 Ramsey Road, Shirley, NY 11967, USA

Purity	> 80% as determined by SDS-PAGE and Coomassie blue staining.
Stability	Stable for 12 months from the date of receipt of the product under proper storage and handling conditions. Avoid repeated freeze-thaw cycles.
Storage	Store at -80 centigrade.
Concentration	>50 ug/mL as determined by microplate BCA method.
Preparation	Recombinant protein was captured through anti-DDK affinity column followed by conventional chromatography steps.
Protein Pathways	Glycolysis / Gluconeogenesis, Metabolic pathways, RNA degradation
Full Length	Full L.

GENE INFORMATION

Gene Name	ENO2 enolase 2 [Homo sapiens (human)]
Official Symbol	ENO2
Synonyms	NSE; HEL-S-279
Gene ID	2026
mRNA Refseq	NM_001975.3
Protein Refseq	NP_001966.1
MIM	131360

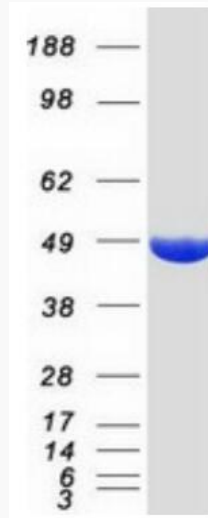
 Tel: 1-631-559-9269 1-516-512-3133

 Email: info@creative-biomart.com  Fax: 1-631-938-8127

 45-1 Ramsey Road, Shirley, NY 11967, USA

UniProt ID

P09104



Coomassie blue staining of purified ENO2 protein.

 Tel: 1-631-559-9269 1-516-512-3133

 Email: info@creative-biomart.com  Fax: 1-631-938-8127

 45-1 Ramsey Road, Shirley, NY 11967, USA