

Recombinant Human ENO2 Protein (Met1-Leu434), N-His tagged

Cat. No. ENO2-3008H Lot. No. (See product label)

SPECIFICATION

Product Overview	Recombinant human ENO2/NSE (Met1-Leu434) protein fused with the N-His tag was expressed in E. coli.
Species	Human
Source	E.coli
ProteinLength	Met1-Leu434
Molecular Mass	49.58 kDa
Purity	>90 % as determined by SDS-PAGE.
Notes	For research use only.
Storage	Use a manual defrost freezer and avoid repeated freeze thaw cycles. Store at 2 to 8 centigrade for one week. Store at -20 to -80 centigrade for twelve months from the date of receipt.
Storage Buffer	0.01M PBS, pH 7.4, 0.02 % NLS
Reconstitution	Reconstitute in sterile water for a stock solution.
Shipping	In general, proteins are provided as lyophilized powder/frozen liquid. They are

 Tel: 1-631-559-9269 1-516-512-3133

 Email: info@creative-biomart.com  Fax: 1-631-938-8127

 45-1 Ramsey Road, Shirley, NY 11967, USA

shipped out with dry ice/blue ice unless customers require otherwise.

GENE INFORMATION

Gene Name ENO2 enolase 2 (gamma, neuronal) [Homo sapiens (human)]

Official Symbol ENO2

Synonyms ENO2; enolase 2 (gamma, neuronal); gamma-enolase; neural enolase; neuron-specific enolase; neurone-specific enolase; neuron specific gamma enolase; 2-phospho-D-glycerate hydrolyase; 2-phospho-D-glycerate hydro-lyase; NSE;

Gene ID 2026

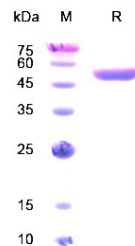
mRNA Refseq NM_001975

Protein Refseq NP_001966

MIM 131360

UniProt ID P09104

SDS-PAGE



 Tel: 1-631-559-9269 1-516-512-3133

 Email: info@creative-biomart.com  Fax: 1-631-938-8127

 45-1 Ramsey Road, Shirley, NY 11967, USA