

Recombinant Human ENO2 protein, His-tagged

Cat. No. ENO2-4747H Lot. No. (See product label)

SPECIFICATION

Product Overview	Recombinant Human ENO2protein(P09104)(449aa), fused with N-terminal His tag, was expressed in E. coli.
Species	Human
Source	E.coli
ProteinLength	449aa(including fusion tag)
Tag	N-His
Form	1XPBS.
Molecular Mass	49.2kDa(including fusion tag)
Storage	Store at -80°C and avoid repeated freeze-thaw cycles.
Reconstitution	It is recommended that sterile water be added to the vial to prepare a stock solution of 0.2 ug/ul. Centrifuge the vial at 4°C before opening to recover the entire contents.

GENE INFORMATION

Gene Name	ENO2 enolase 2 (gamma, neuronal) [Homo sapiens]
Official Symbol	ENO2

 Tel: 1-631-559-9269 1-516-512-3133

 Email: info@creative-biomart.com  Fax: 1-631-938-8127

 45-1 Ramsey Road, Shirley, NY 11967, USA

Synonyms ENO2; enolase 2 (gamma, neuronal); gamma-enolase; neural enolase; neuron-specific enolase; neurone-specific enolase; neuron specific gamma enolase; 2-phospho-D-glycerate hydrolyase; 2-phospho-D-glycerate hydro-lyase; NSE;

Gene ID [2026](#)

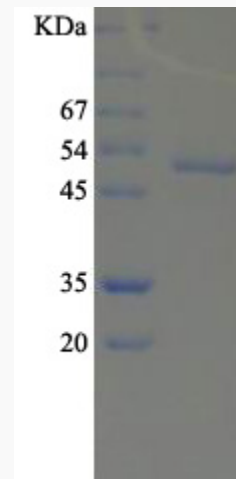
mRNA Refseq [NM_001975](#)

Protein Refseq [NP_001966](#)

MIM [131360](#)

UniProt ID [P09104](#)

SDS-PAGE



 Tel: 1-631-559-9269 1-516-512-3133

 Email: info@creative-biomart.com  Fax: 1-631-938-8127

 45-1 Ramsey Road, Shirley, NY 11967, USA