

# Recombinant Human ENO2 Protein, Myc/DDK-tagged, C13 and N15-labeled

**Cat. No.** ENO2-6181H    **Lot. No.** (See product label)

## SPECIFICATION

### Product Overview

ENO2 MS Standard C13 and N15-labeled recombinant protein (NP\_001966) with a C-terminal MYC/DDK tag, was expressed in HEK293 cells.

### Species

Human

### Source

HEK293

### Description

This gene encodes one of the three enolase isoenzymes found in mammals. This isoenzyme, a homodimer, is found in mature neurons and cells of neuronal origin. A switch from alpha enolase to gamma enolase occurs in neural tissue during development in rats and primates.

### Molecular Mass

47.3 kDa

### AA Sequence

```
MSIEKIWAREILDSRGNPTVEVDLYTAKGLFRAAVPSGASTGIYEALERDGDQKRYL
GKGV LKAVDHINSTIAPALISSGLSVVEQEKL DNLML ELDG TENKSKFGANAILGVSLA
VCKAGAAERELPLYRHIAQLAGNSDLILPVP AFNVINGGSHAGNKLAMQEFMILPVGA
ESFRDAMRLGAEVYHTLKGVIKDKYGKDATNVGDEGGFAPNILENSEALELVKEAID
KAGYTEKIVIGMDVAASEFYRDGKYDLDFKSPTDPSRYITGDQLGALYQDFVRDYPV
VSIEDPFDQDDWAAWSKFTANVGIQIVGDDLTVTNPKRIERAVEEKACNCLLLKVNQI
GSVTEAIQACKLAQENGWGMVSHRSGETEDTFIADLVVGLCTGQIKTGAPCRSER
LAKYNQLMRIEEELGDEARFAGHNFRNPSVLTRTRPLEQKLISEEDLAANDILDYKDD
DDKV
```

 Tel: 1-631-559-9269    1-516-512-3133

 Email: [info@creative-biomart.com](mailto:info@creative-biomart.com)     Fax: 1-631-938-8127

 45-1 Ramsey Road, Shirley, NY 11967, USA

<b>Purity</b>	> 80% as determined by SDS-PAGE and Coomassie blue staining
<b>Stability</b>	Stable for 3 months from receipt of products under proper storage and handling conditions.
<b>Storage</b>	Store at -80 centigrade. Avoid repeated freeze-thaw cycles.
<b>Concentration</b>	50 µg/mL as determined by BCA
<b>Storage Buffer</b>	100 mM glycine, 25 mM Tris-HCl, pH 7.3.

## GENE INFORMATION

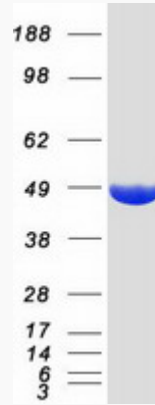
<b>Gene Name</b>	ENO2 enolase 2 [ Homo sapiens (human) ]
<b>Official Symbol</b>	ENO2
<b>Synonyms</b>	ENO2; enolase 2 (gamma, neuronal); gamma-enolase; neural enolase; neuron-specific enolase; neurone-specific enolase; neuron specific gamma enolase; 2-phospho-D-glycerate hydrolyase; 2-phospho-D-glycerate hydro-lyase; NSE;
<b>Gene ID</b>	2026
<b>mRNA Refseq</b>	NM_001975
<b>Protein Refseq</b>	NP_001966
<b>MIM</b>	131360
<b>UniProt ID</b>	P09104

 Tel: 1-631-559-9269 1-516-512-3133

 Email: [info@creative-biomart.com](mailto:info@creative-biomart.com)  Fax: 1-631-938-8127

 45-1 Ramsey Road, Shirley, NY 11967, USA

SDS-PAGE



 Tel: 1-631-559-9269 1-516-512-3133

 Email: [info@creative-biomart.com](mailto:info@creative-biomart.com)  Fax: 1-631-938-8127

 45-1 Ramsey Road, Shirley, NY 11967, USA