

Recombinant Human ENO3 Protein, MYC/DDK-tagged, C13 and N15-labeled

Cat. No. ENO3-218H **Lot. No.** (See product label)

SPECIFICATION

Product Overview	ENO3 MS Standard C13 and N15-labeled recombinant protein (NP_001967) with a C-terminal MYC/DDK tag, was expressed in HEK293 cells.
Species	Human
Source	HEK293
Description	This gene encodes one of the three enolase isoenzymes found in mammals. This isoenzyme is found in skeletal muscle cells in the adult where it may play a role in muscle development and regeneration. A switch from alpha enolase to beta enolase occurs in muscle tissue during development in rodents. Mutations in this gene have been associated with glycogen storage disease. Alternatively spliced transcript variants encoding different isoforms have been described. [provided by RefSeq, Jul 2010]
Molecular Mass	46.8 kDa
AA Sequence	MAMQKIFAREILDSRGNPTVEVDLHTAKGRFRAAVPSGASTGIYEALERDGDKGRY LGKGVLKAVENINNTLGPALLQKKLSVADQEKVDKFMIELDGTENKSKFGANAILGVS LAVCKAGAAEKGVPLYRHIADLAGNPDLILPVPAFNVINGGSHAGNKLAMQEFMILPV GASSFKEAMRIGAEVYHHLKGVKAKYKGDATNVGDEGGFAPNILENNEALELLKTAI QAAGYPDKVIGMDVAASEFYRNGKYDLDFKSPDDPARHITGEKLGELYKSFINKYP VVSIEDPFDQDDWATWTSFSLSGVNIQIVGDDLTVTNPKRIAQAVEKKACNCLLLKVN QIGSVTESIQACKLAQSNWGWVMVSHRSGETEDTFIADLVVGLCTGQIKTGAPCRSE

 Tel: 1-631-559-9269 1-516-512-3133

 Email: info@creative-biomart.com  Fax: 1-631-938-8127

 45-1 Ramsey Road, Shirley, NY 11967, USA

RLAKYNQLMRIIEEALGDKAIFAGRKFRNPKAKTRTRPLEQKLISEEDLAANDILDYKD
DDDKV

Purity > 80% as determined by SDS-PAGE and Coomassie blue staining

Stability Stable for 3 months from receipt of products under proper storage and handling conditions.

Storage Store at -80 centigrade. Avoid repeated freeze-thaw cycles.

Concentration 50 µg/mL as determined by BCA

Storage Buffer 100 mM glycine, 25 mM Tris-HCl, pH 7.3.

GENE INFORMATION

Gene Name ENO3 enolase 3 (beta, muscle) [Homo sapiens (human)]

Official Symbol ENO3

Synonyms ENO3; enolase 3 (beta, muscle); enolase 3, (beta, muscle); beta-enolase; muscle-specific enolase; skeletal muscle enolase; 2-phospho-D-glycerate hydrolyase; MSE; GSD13;

Gene ID 2027

mRNA Refseq NM_001976

Protein Refseq NP_001967

MIM 131370

 Tel: 1-631-559-9269 1-516-512-3133

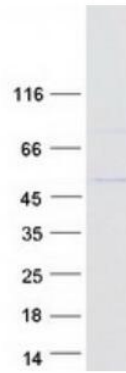
 Email: info@creative-biomart.com  Fax: 1-631-938-8127

 45-1 Ramsey Road, Shirley, NY 11967, USA

UniProt ID

P13929

SDS-PAGE



 Tel: 1-631-559-9269 1-516-512-3133

 Email: info@creative-biomart.com  Fax: 1-631-938-8127

 45-1 Ramsey Road, Shirley, NY 11967, USA