

Recombinant Human ENO3 Protein, Myc/DDK-tagged, C13 and N15-labeled

Cat. No. ENO3-2346H Lot. No. (See product label)

SPECIFICATION

Product Overview

ENO3 MS Standard C13 and N15-labeled recombinant protein (NP_443739) with a C-terminal MYC/DDK tag, was expressed in HEK293 cells.

Species

Human

Source

HEK293

Description

This gene encodes one of the three enolase isoenzymes found in mammals. This isoenzyme is found in skeletal muscle cells in the adult where it may play a role in muscle development and regeneration. A switch from alpha enolase to beta enolase occurs in muscle tissue during development in rodents. Mutations in this gene have been associated with glycogen storage disease. Alternatively spliced transcript variants encoding different isoforms have been described.

Molecular Mass

46.9 kDa

AA Sequence

MAMQKIFAREILDSRGNPTVEVDLHTAKGRFRAAVPSGASTGIYEALERDGDKGRY
 LGKGVLKAVENINSTLGPALLQKKLSVADQEKVDKFMIELDGTENKSKFGANAILGVS
 LAVCKAGAAEKGVPLYRHIADLAGNPDLILPVPAFNVINGGSHAGNKLAMQEFMILPV
 GASSFKEAMRIGAEVYHHLKGVKAKYKGDATNVGDEGGFAPNILENNEALELLKTAI
 QAAGYPDKVIGMDVAASEFYRNGKYDLDFKSPDDPARHITGEKLGELYKSFINKYP
 VVSIEDPFDQDDWATWTSFSLSGVNIQIVGDDLTVTNPKRIAQAVEKKACNCLLLKVN
 QIGSVTESIQACKLAQSNWGWVMVSHRSGETEDTFIADLVVGLCTGQIKTGAPCRSE

 Tel: 1-631-559-9269 1-516-512-3133

 Email: info@creative-biomart.com  Fax: 1-631-938-8127

 45-1 Ramsey Road, Shirley, NY 11967, USA

RLAKYNQLMRIIEEALGDKAIFAGRKFRNPKAKTRTRPLEQKLISEEDLAANDILDYKD
DDDKV

Purity > 80% as determined by SDS-PAGE and Coomassie blue staining

Stability Stable for 3 months from receipt of products under proper storage and handling conditions.

Storage Store at -80 centigrade. Avoid repeated freeze-thaw cycles.

Concentration 50 µg/mL as determined by BCA

Storage Buffer 100 mM glycine, 25 mM Tris-HCl, pH 7.3.

GENE INFORMATION

Gene Name [ENO3 enolase 3 \[Homo sapiens \(human\) \]](#)

Official Symbol [ENO3](#)

Synonyms ENO3; enolase 3 (beta, muscle); enolase 3, (beta, muscle); beta-enolase; muscle-specific enolase; skeletal muscle enolase; 2-phospho-D-glycerate hydrolyase; MSE; GSD13;

Gene ID [2027](#)

mRNA Refseq [NM_053013](#)

Protein Refseq [NP_443739](#)

MIM [131370](#)

 Tel: 1-631-559-9269 1-516-512-3133

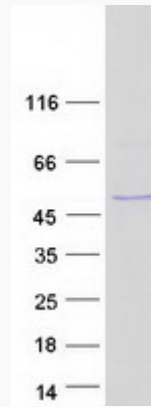
 Email: info@creative-biomart.com  Fax: 1-631-938-8127

 45-1 Ramsey Road, Shirley, NY 11967, USA

UniProt ID

P13929

SDS-PAGE



 Tel: 1-631-559-9269 1-516-512-3133

 Email: info@creative-biomart.com  Fax: 1-631-938-8127

 45-1 Ramsey Road, Shirley, NY 11967, USA